

# Faculty Senate

[Faculty Senate](#) » [Committees/Councils](#) » Graduate Admissions Committee

## Archive from 1998-2014

**File is over 60 pages. Use caution when printing.**

### Graduate Admissions Committee

- [Standing Rules](#)
- [Membership](#)
- [Scheduled Meetings](#)
- Agendas
- Minutes
- [Annual Reports](#)
  
- [Internal Policies](#)
- [FERPA Tutorial](#)

| [Home](#) | [Agendas](#) | [Bylaws](#) | [Committees](#) | [Elections](#) | [Faculty Forum Papers](#) | [Handbook](#) | [Meetings](#) | [Membership/Attendance](#) | [Minutes](#) |

# Faculty Senate

[Faculty Senate](#) » [Committees/Councils](#) » [Graduate Admissions Committee](#) » Standing Rules

## Graduate Admissions Committee

### Standing Rules

The Graduate Admissions Committee acts on appealed applications for admission to the Graduate School. Candidates are considered on the basis of the undergraduate record and the preparation for graduate work, with special reference to the particular field desired. The Committee consists of eight Faculty members, at least seven of whom are Graduate Faculty members from different colleges, with the Director of Admissions, ex-officio, non-voting. The committee members should be selected to ensure adequate representation of international education. The Chair of the Graduate Admissions Committee shall be a liaison member, non-voting, on the Graduate Council.

(04/06)

| [Home](#) | [Agendas](#) | [Bylaws](#) | [Committees](#) | [Elections](#) | [Faculty Forum Papers](#) | [Handbook](#) | [Meetings](#) | [Membership/Attendance](#) | [Minutes](#) |

Faculty Senate, Oregon State University, Corvallis, OR 97331-6203 · 541.737.4344

[Contact us with your comments, questions and feedback](#)

[Copyright](#) © 2008 Oregon State University | [Disclaimer](#)

Valid [xhtml](#).

# Faculty Senate

[Faculty Senate](#) » [Committees/Councils](#) » [Graduate Admissions Committee](#) » Membership

## Graduate Admissions Committee

### Membership

- [2013-2014](#)
- [2012-2013](#)
- [2011-2012](#)
- [2010-2011](#)
- [2009-2010](#)
- [2008-2009](#)
- [2007-2008](#)
- [2006-2007](#)
- [2005-2006](#)
- [2004-2005](#)
- [2003-2004](#)
- [2002-2003](#)
- [2001-2002](#)
- [2000-2001](#)
- [1999-2000](#)

| [Home](#) | [Agendas](#) | [Bylaws](#) | [Committees](#) | [Elections](#) | [Faculty Forum Papers](#) | [Handbook](#) | [Meetings](#) | [Membership/Attendance](#) | [Minutes](#) |

Faculty Senate, Oregon State University, Corvallis, OR 97331-6203 · 541.737.4344

[Contact us with your comments, questions and feedback](#)

[Copyright](#) © 2008 Oregon State University | [Disclaimer](#)

Valid [xhtml](#).

# Faculty Senate

[Faculty Senate](#) » [Committees/Councils](#) » [Graduate Admissions Committee](#) » Scheduled Meetings 2013 - 2014

## Graduate Admissions Committee

The committee meets the first and third Wednesday of most months. All meetings will start at 3:30 pm and held in room A-400 Kerr Admin. Building, at the west end of the fourth floor.

This committee does **not** meet during the month of July, and meets in August as needed.

This schedule is subject to change. If you have questions regarding a particular date, please contact Rosemary Garagnani at 541-737-1465.

### 2014

September 3  
September 17

October 1  
October 15

November 5  
November 19

December 3  
December 19

### 2015

January 7  
January 21

February 4  
February 18

March 4  
March 18

April 1  
April 15

May 6  
May 20

June 3  
June 17

*Recessed during July*

| [Home](#) | [Agendas](#) | [Bylaws](#) | [Committees](#) | [Elections](#) | [Faculty Forum Papers](#) | [Handbook](#) | [Meetings](#) | [Membership/Attendance](#) | [Minutes](#) |

Faculty Senate, Oregon State University, Corvallis, OR 97331-6203 · 541.737.4344

[Contact us with your comments, questions and feedback](#)

[Copyright](#) © 2008 Oregon State University | [Disclaimer](#)

Valid [xhtml](#).

# Faculty Senate

[Faculty Senate](#) » [Committees/Councils](#) » [Graduate Admissions Committee](#) » Annual Reports

## Graduate Admissions Committee

### Annual Reports

- [2012-2013](#)
- [2011-2012](#)
- [2010-2011](#)
- [2009-2010](#)
- [2008-2009](#)
- [2007-2008](#)
- [2006-2007](#)
- [2005-2006](#)
- [2004-2005](#)
- [2003-2004](#)
- [2002-2003](#)
- [2001-2002](#)
- [2000-2001](#)
- [1999-2000](#)
- [1998-1999](#)

| [Home](#) | [Agendas](#) | [Bylaws](#) | [Committees](#) | [Elections](#) | [Faculty Forum Papers](#) | [Handbook](#) | [Meetings](#) | [Membership/Attendance](#) | [Minutes](#) |

Faculty Senate, Oregon State University, Corvallis, OR 97331-6203 · 541.737.4344

[Contact us with your comments, questions and feedback](#)

[Copyright](#) © 2008 Oregon State University | [Disclaimer](#)

Valid [xhtml](#).

# Faculty Senate

[Faculty Senate](#) » [Committees/Councils](#) » [Graduate Admissions Committee](#) » Internal Policies

## Graduate Admissions Committee

- [Process to Streamline the Appealed Applications for Admission to the Graduate School](#)

| [Home](#) | [Agendas](#) | [Bylaws](#) | [Committees](#) | [Elections](#) | [Faculty Forum Papers](#) | [Handbook](#) | [Meetings](#) | [Membership/Attendance](#) | [Minutes](#) |

Faculty Senate, Oregon State University, Corvallis, OR 97331-6203 · 541.737.4344

[Contact us with your comments, questions and feedback](#)

[Copyright](#) © 2008 Oregon State University | [Disclaimer](#)

Valid [xhtml](#).

# Faculty Senate

[Faculty Senate](#) » [Committees/Councils](#) » [Graduate Admissions Committee](#) » [Membership](#) » Membership — 2013-2014

## Graduate Admissions Committee

### Membership — 2013-2014

Wade Marcum, Chair '15	Nuclear Engineering
Michael Vardaro '14	Earth, Ocean & Atmospheric Sciences
Minjeong Kim '14	Design and Human Environment
Chong Fang '15	Chemistry
Candy Pierson-Charlton '15	INTO OSU
Kevin Boston (v. Higgins) '15	Forest Engineering, Resources & Management
Jeri Bartholomew '16	Salmon Disease Laboratory
Taifo Mahmud '16	Pharmacy
Qinglai Meng '16	Economics

*Ex-officio:* Director of Admissions (Rosemary Garagnani)

*Executive Committee Liaison – Andy Karplus*

| [Home](#) | [Agendas](#) | [Bylaws](#) | [Committees](#) | [Elections](#) | [Faculty Forum Papers](#) | [Handbook](#) | [Meetings](#) | [Membership/Attendance](#) | [Minutes](#) |

# Faculty Senate

[Faculty Senate](#) » [Committees/Councils](#) » [Graduate Admissions Committee](#) » [Membership](#) » Membership — 2012-2013

## Graduate Admissions Committee

### Membership — 2012-2013

Mark Needham, Chair '13	Forest Ecosystems & Society
TBA '13 (v. Pedersen)	
Ricardo Mata-Gonzalez '13	Rangeland Ecology and Management
Michael Vardaro '14	Earth, Ocean & Atmospheric Sciences
Chong Fang '15	Chemistry
Candy Pierson-Charlton '15	INTO OSU
Wade Marcum '15	Nuclear Engineering
Karen Higgins '15	Education

*Ex-officio:* Director of Admissions (Rosemary Garagnani)

*Executive Committee Liaison – Andy Karplus*

| [Home](#) | [Agendas](#) | [Bylaws](#) | [Committees](#) | [Elections](#) | [Faculty Forum Papers](#) | [Handbook](#) | [Meetings](#) | [Membership/Attendance](#) | [Minutes](#) |

# Faculty Senate

[Faculty Senate](#) » [Committees/Councils](#) » [Graduate Admissions Committee](#) » [Membership](#) » Membership — 2011-2012

## Graduate Admissions Committee

### Membership — 2011-2012

Leah Minc, Chair '12	Anthropology
Wade Marcum '12	Nuclear Engineering & Radiation Health Physics
TBA (v. Haggerty) '12	
Elaine Pedersen '13	Design & Human Environment
Ricardo Mata-Gonzalez '13	Rangeland Ecology and Management
Mark Needham '13	Forest Ecosystems & Society
Michael Vardaro '14	Oceanic/Atmospheric Sciences
TBA '14	
TBA '14	

*Ex-officio:* Director of Admissions (Rosemary Garagnani)

*Executive Committee Liaison* - TBA

| [Home](#) | [Agendas](#) | [Bylaws](#) | [Committees](#) | [Elections](#) | [Faculty Forum Papers](#) | [Handbook](#) | [Meetings](#) | [Membership/Attendance](#) | [Minutes](#) |

Faculty Senate, Oregon State University, Corvallis, OR 97331-6203 · 541.737.4344  
[Contact us with your comments, questions and feedback](#)  
[Copyright](#) © 2008 Oregon State University | [Disclaimer](#)  
Valid [xhtml](#).

# Faculty Senate

[Faculty Senate](#) » [Committees/Councils](#) » [Graduate Admissions Committee](#) » [Membership](#) » Membership — 2010-2011

## Graduate Admissions Committee

### Membership — 2010-2011

Leah Minc, Chair '12	Anthropology
Temesgen Hailemariam '11	Forest Resources
TBA (v. Harter) '11	
Roy Haggerty '12	Geosciences
Wade Marcum '12	Nuclear Engineering & Radiation Health Physics
Elaine Pedersen '13	Design & Human Environment
Ricardo Mata-Gonzalez '13	Rangeland Ecology and Management
Mark Needham '13	Forest Ecosystems & Society

*Ex-officio:* Director of Admissions (Rosemary Garagnani)

*Executive Committee Liaison - John Selker*

| [Home](#) | [Agendas](#) | [Bylaws](#) | [Committees](#) | [Elections](#) | [Faculty Forum Papers](#) | [Handbook](#) | [Meetings](#) | [Membership/Attendance](#) | [Minutes](#) |

# Faculty Senate

[Faculty Senate](#) » [Committees/Councils](#) » [Graduate Admissions Committee](#) » [Membership](#) » Membership – 2009-2010

## Graduate Admissions Committee

### Membership – 2009-2010

Temesgen Hailemariam, Chair '11	Forest Resources
Hannah Rempel '10	Valley Library
Rayetta Beall '10	Forest Engineering
TBA (v. Dowling) '11	English Language Institute
Stewart Trost (v. Harter) '11	Nutrition & Exercise Science
Roy Haggerty '12	Geosciences
Leah Minc '12	Radiation Center
TBA '12	

*Ex-officio:* Director of Admissions (Rosemary Garagnani)

*Executive Committee Liaison* - Stan Gregory

| [Home](#) | [Agendas](#) | [Bylaws](#) | [Committees](#) | [Elections](#) | [Faculty Forum Papers](#) | [Handbook](#) | [Meetings](#) | [Membership/Attendance](#) | [Minutes](#) |

# Faculty Senate

[Faculty Senate](#) » [Committees/Councils](#) » [Graduate Admissions Committee](#) » [Membership](#) » Membership – 2008-2009

## Graduate Admissions Committee

### Membership – 2008-2009

Ricardo Matano '09, Chair	Oceanic & Atmospheric Sciences
Hilary Egna '09	ACRSP
TBA (v. Saunders)	
Hannah Remple '10	Valley Library
Rayetta Beall '10	Forest Engineering
Barbara Dowling '11	English Language Institute
Temesgen Hailemariam '11	Forest Resoources
Rod Harter '11	Nutrition & Exercise Sciences

*Ex-officio:* Director of Admissions (Rosemary Garagnani)

*Executive Committee Liaison* - Stan Gregory

| [Home](#) | [Agendas](#) | [Bylaws](#) | [Committees](#) | [Elections](#) | [Faculty Forum Papers](#) | [Handbook](#) | [Meetings](#) | [Membership/Attendance](#) | [Minutes](#) |

# Faculty Senate

[Faculty Senate](#) » [Committees/Councils](#) » [Graduate Admissions Committee](#) » [Membership](#) » 2007-2008

## Graduate Admissions Committee

### 2007-2008

#### Membership -- 2007-2008

Taifo Mahmud '08, Chair	Pharmacy
Jim Richman '08	Oceanic & Atmospheric Sciences
Michael Taylor (v. Li) '08	Biomedical Sciences
Hilary Egna '09	ACRSP
Ricardo Matano '09	Oceanic & Atmospheric Sciences
Peter Saunders '09	Center for Teaching & Learning
Hannah Remple	Valley Library
Rayetta Beall	Forest Engineering

*Ex-officio:* Director of Admissions (Rosemary Garagnani)

Executive Committee Liaison - Paul Doescher

| [Home](#) | [Agendas](#) | [Bylaws](#) | [Committees](#) | [Elections](#) | [Faculty Forum Papers](#) | [Handbook](#) | [Meetings](#) | [Membership/Attendance](#) | [Minutes](#) |

Faculty Senate, Oregon State University, Corvallis, OR 97331-6203 · 541.737.4344  
[Contact us with your comments, questions and feedback](#)  
[Copyright](#) © 2008 Oregon State University | [Disclaimer](#)  
Valid [xhtml](#).

# Faculty Senate

[Faculty Senate](#) » [Committees/Councils](#) » [Graduate Admissions Committee](#) » [Membership](#) » 2006-2007

## Graduate Admissions Committee

### 2006-2007

Membership -- 2006-2007

Bill Warnes '07, Chair	Mechanical Engineering
Andy Karplus (v. Roberts) '07	Biochemistry
Taifo Mahmud '08	Pharmacy
Jim Richman '08	Oceanic & Atmospheric Sciences
Michael Taylor (v. Li) '08	Biomedical Sciences
Hilary Eгна '09	ACRSP
Ricardo Matano '09	Oceanic & Atmospheric Sciences
Peter Saunders '09	Center for Teaching & Learning

*Ex-officio:* Director of Admissions (Rosemary Garagnani)

Executive Committee Liaison - Paul Doescher

| [Home](#) | [Agendas](#) | [Bylaws](#) | [Committees](#) | [Elections](#) | [Faculty Forum Papers](#) | [Handbook](#) | [Meetings](#) | [Membership/Attendance](#) | [Minutes](#) |

Faculty Senate, Oregon State University, Corvallis, OR 97331-6203 · 541.737.4344

[Contact us with your comments, questions and feedback](#)

[Copyright](#) © 2008 Oregon State University | [Disclaimer](#)

Valid [xhtml](#).

# Faculty Senate

[Faculty Senate](#) » [Committees/Councils](#) » [Graduate Admissions Committee](#) » [Membership](#) » Membership -- 2005-2006

## Graduate Admissions Committee

Membership -- 2005-2006

Rakesh Gupta '06, Chair	Forestry
Ping Ge '06	Engineering
Valerie Rosenberg '06	International Programs
TBA '07	
Bill Warnes '07	Engineering
Hua-Yu Li '07 (v. Bird)	Liberal Arts
Taifo Mahmud '08	Pharmacy
Jim Richman '08	Oceanic and Atmospheric Sciences

Ex-Officio: Director of Admissions (Rosemary Garagnani)

Executive Committee Liaison - Larry Curtis

| [Home](#) | [Agendas](#) | [Bylaws](#) | [Committees](#) | [Elections](#) | [Faculty Forum Papers](#) | [Handbook](#) | [Meetings](#) | [Membership/Attendance](#) | [Minutes](#) |

Faculty Senate, Oregon State University, Corvallis, OR 97331-6203 · 541.737.4344

[Contact us with your comments, questions and feedback](#)

[Copyright](#) © 2008 Oregon State University | [Disclaimer](#)

Valid [xhtml](#).

# Faculty Senate

[Faculty Senate](#) » [Committees/Councils](#) » [Graduate Admissions Committee](#) » [Membership](#) » Membership -- 2004-2005

## Graduate Admissions Committee

Membership -- 2004-2005

Eileen Waldschmidt '05, Chair	School of Education
Sunil Khanna '05	Anthropology
Ping Ge '06	Mechanical Engineering
Rakesh Gupta '06	Agricultural & Resources Economics
Valerie Rosenberg '06	International Programs
Karyn Bird '07	Veterinary Medicine
Lani Roberts '07	Philosophy
Bill Warnes '07	Mechanical Engineering
Ex-Officio: Director of Admissions (Rosemary Garagnani)	

Executive Committee Liaison - Joan Gross

| [Home](#) | [Agendas](#) | [Bylaws](#) | [Committees](#) | [Elections](#) | [Faculty Forum Papers](#) | [Handbook](#) | [Meetings](#) | [Membership/Attendance](#) | [Minutes](#) |

# Faculty Senate

[Faculty Senate](#) » [Committees/Councils](#) » [Graduate Admissions Committee](#) » [Membership](#) » Membership -- 2003-2004

## Graduate Admissions Committee

### Membership -- 2003-2004

Eileen Waldschmidt '05, Chair	School of Education
Maggie Niess '04	Science & Mathematics Education
TBA (v. White) '04	
Sunil Khanna '05	Anthropology
TBA (v. Smart) '05	
Ping Ge '06	Mechanical Engineering
Rakesh Gupta '06	Wood Science & Engineering
TBA '06	

Ex-Officio: Dir. of Admissions (Rosemary Garagnani)

Executive Committee Liaison - John Westall

| [Home](#) | [Agendas](#) | [Bylaws](#) | [Committees](#) | [Elections](#) | [Faculty Forum Papers](#) | [Handbook](#) | [Meetings](#) | [Membership/Attendance](#) | [Minutes](#) |

# Faculty Senate

[Faculty Senate](#) » [Committees/Councils](#) » [Graduate Admissions Committee](#) » [Membership](#) » Membership -- 2002-2003

## Graduate Admissions Committee

### Membership -- 2002-2003

Karyn Bird '03, Chair	Veterinary Medicine
Rick Vong '03	Oceanic & Atmospheric Sciences
Maggie Niess '04	Science & Mathematics Education
Bill Smart '04	International Programs
Karen White '04	Health & Human Sciences
Sunnil Khanna '05	Anthropology
Eileen Waldschmidt '05	School of Education

Ex-Officio: Dir. of Admissions (Michele Sandlin)

Executive Committee Liaison - Dianne Erickson

| [Home](#) | [Agendas](#) | [Bylaws](#) | [Committees](#) | [Elections](#) | [Faculty Forum Papers](#) | [Handbook](#) | [Meetings](#) | [Membership/Attendance](#) | [Minutes](#) |

Faculty Senate, Oregon State University, Corvallis, OR 97331-6203 · 541.737.4344

[Contact us with your comments, questions and feedback](#)

[Copyright](#) © 2008 Oregon State University | [Disclaimer](#)

Valid [xhtml](#).

# Faculty Senate

[Faculty Senate](#) » [Committees/Councils](#) » [Graduate Admissions Committee](#) » [Membership](#) » Membership -- 2001-2002

## Graduate Admissions Committee

### Membership -- 2001-2002

Maggie Niess '04, Chair	Science & Mathematics Education
Carl Schreck (v. Tremblay) '02	Fisheries & Wildlife
Subramanian Sivaramakrishnan '02	Electrical & Computer Engineering
Eileen Waldschmidt (v. Good) '02	Education
Karyn Bird '03	Veterinary Medicine
Rick Vong '03	Oceanic & Atmospheric Sciences
Bill Smart '04	International Education
Karen White '04	Health & Human Performance

Ex-Officio: Dir. of Admissions (Michele Sandlin)

Executive Committee Liaison – Dianne Erickson

| [Home](#) | [Agendas](#) | [Bylaws](#) | [Committees](#) | [Elections](#) | [Faculty Forum Papers](#) | [Handbook](#) | [Meetings](#) | [Membership/Attendance](#) | [Minutes](#) |

Faculty Senate, Oregon State University, Corvallis, OR 97331-6203 · 541.737.4344

[Contact us with your comments, questions and feedback](#)

[Copyright](#) © 2008 Oregon State University | [Disclaimer](#)

Valid [xhtml](#).

# Faculty Senate

[Faculty Senate](#) » [Committees/Councils](#) » [Graduate Admissions Committee](#) » [Membership](#) » Membership -- 2000-2001

## Graduate Admissions Committee

### Membership -- 2000-2001

Maggie Niess (v. Engel) '01, Chair	Science & Math Education
Doug Barofsky '01	Chemistry
Ann Messersmith '01	Nutrition & Food Management
Jim Good '02	Oceanic & Atmospheric Sciences
Subramanian Sivaramakrishnan '02	Electrical & Computer Engineering
Carol Tremblay '02	Economics
Karyn Bird '03	Veterinary Medicine
Eileen Waldschmidt '03	Education

Ex-Officio: Dir. of Admissions (Michele Sandlin)

Executive Committee Liaison – Stella Coakley

| [Home](#) | [Agendas](#) | [Bylaws](#) | [Committees](#) | [Elections](#) | [Faculty Forum Papers](#) | [Handbook](#) | [Meetings](#) | [Membership/Attendance](#) | [Minutes](#) |

# Faculty Senate

[Faculty Senate](#) » [Committees/Councils](#) » [Graduate Admissions Committee](#) » [Membership](#) » Membership -- 1999-2000

## Graduate Admissions Committee

### Membership -- 1999-2000

Doug Barofsky (v. Fitzgerald) '99 , Chair	Chemistry
Karyn Bird (v. Crawford) '00	Veterinary Medicine
Karen Hooker '00	Gerontology Program
Maggie Niess (v. Engel) '01	Science & Math Ed.
Ann Messersmith '01	Nutrition & Food Management
Jim Good '02	Oceanic & Atmospheric Sciences
Subramanian Sivaramakrishnan '02	Electrical & Computer Engineering
Carol Tremblay '02	Economics

Ex-Officio: Dir. of Admissions (TBA)

Executive Committee Liaison – Stella Coakley

| [Home](#) | [Agendas](#) | [Bylaws](#) | [Committees](#) | [Elections](#) | [Faculty Forum Papers](#) | [Handbook](#) | [Meetings](#) | [Membership/Attendance](#) | [Minutes](#) |

# Faculty Senate

[Faculty Senate](#) » [Committees/Councils](#) » [Graduate Admissions Committee](#) » [Annual Reports](#) » 2012-2013 Annual Report

## Graduate Admissions Committee

### 2012-2013 Annual Report

DATE: August 5, 2013  
 TO: Executive Committee, Faculty Senate  
 FROM: Mark Needham, GAC Chair  
 Committee: Chong Fang, Karen Higgins, Wade Marcum, Ricardo Mata-Gonzalez, Candace Pierson-  
 Members: Charlton, Michael Vardaro  
 Ex-Officio: Rosemary Garagnani  
 SUBJECT: 2012-2013 Annual Report for the Graduate Admissions Committee (GAC)  
 ATTACHMENT: [Annual Activity Audit Report for the Graduate Admissions Committee](#) (GAC)

#### Committee members:

Mark Needham '13, Chair	Forest Ecosystems and Society
Ricardo Mata-Gonzalez '13	Rangeland Ecology and Management
Michael Vardaro '14	Earth, Ocean and Atmospheric Sciences
Chong Fang '15	Chemistry
Candace Pierson-Charlton '15	INTO OSU
Wade Marcum '15	Nuclear Engineering and Radiation Health Physics
Karen Higgins '15	Education
<i>Ex-Officio:</i> Rosemary Garagnani	

The Graduate Admissions Committee (GAC) operates under the Standing Rules of the Faculty Senate and under the policies and procedures formulated by the Graduate Council. The role of the GAC is to review files of Graduate School applicants who do not meet the minimum admission requirements. In the case of domestic applicants, the requirement is a grade point average (GPA) of 3.00 in the last 90 quarter hours or 60 semester hours of the first undergraduate degree. For international students, a similar GPA requirement applies, plus either a TOEFL score of 550 (213 on the computer version of the test) or a degree completed at an accredited institution offering all course work in English.

Cases not meeting these minimum requirements may be appealed to the GAC for review with one of the following outcomes: admit regular, admit conditionally, admit provisionally, or deny admittance. For a conditional admit, the standard condition is that students must earn a 3.00 (B grade) or better in each course of the first 18 hours of graded graduate credits. A provisional admit usually involves additional coursework or GPA stipulations imposed by the petitioning department. If students are denied admittance, they may still complete 24 hours of upper division courses or graduate work, earning a 3.00 or better, to be considered for admission if the department approves the acceptance. Students who use this avenue are not reconsidered by the GAC unless they petition based on fewer than 24 hours of completed work.

In 2006, the Faculty Senate voted to streamline the appeals process for those applications not meeting these minimum requirements. This policy change established that if a department petitions for *conditional admission* for an applicant with a GPA of 2.75 or above, the admissions office will automatically grant the conditional admission as requested. If regular or provisional admission is requested, the file would be reviewed by the GAC. Similarly, if a department petitions for any form of admission for an applicant with a GPA below 2.75, the file would be reviewed by the GAC and a final admission decision would be made.

In reviewing cases, the GAC considers a range of predictors for success in graduate school, including standardized test scores (e.g., GRE), letters of recommendation, other academic performance, and work experience since the applicant earned their previous degree(s). Each file is carefully reviewed by at least two committee members who look for substantive and compelling evidence indicating that the applicant will succeed at the graduate level to justify waiving the admission requirements.

During the period of August 1, 2012 to June 19, 2013, 21 committee meetings were originally scheduled, essentially on a biweekly basis. Files (i.e., cases) were available for review for 13 of these meetings, so 8 meetings were cancelled given the lack of files (see [committee annual audit](#) prepared by Graduate School Admissions). The GAC considered 39 files (i.e., cases; Table 1). Of these, 24 (62%) were domestic students and 15 (38%) were international students. This represents a slight increase in the percentage of international student cases compared to both 2011-2012 (27%) and 2010-2011 (32.8%). Seven decisions (16%) involved full admission with no conditions, 27 decisions (63%) involved conditional admission, 4 decisions (9%) involved provisional admission, and 5 decisions (12%) involved denying admission. Four of these decisions involved simultaneously granting both conditional and provisional admission.

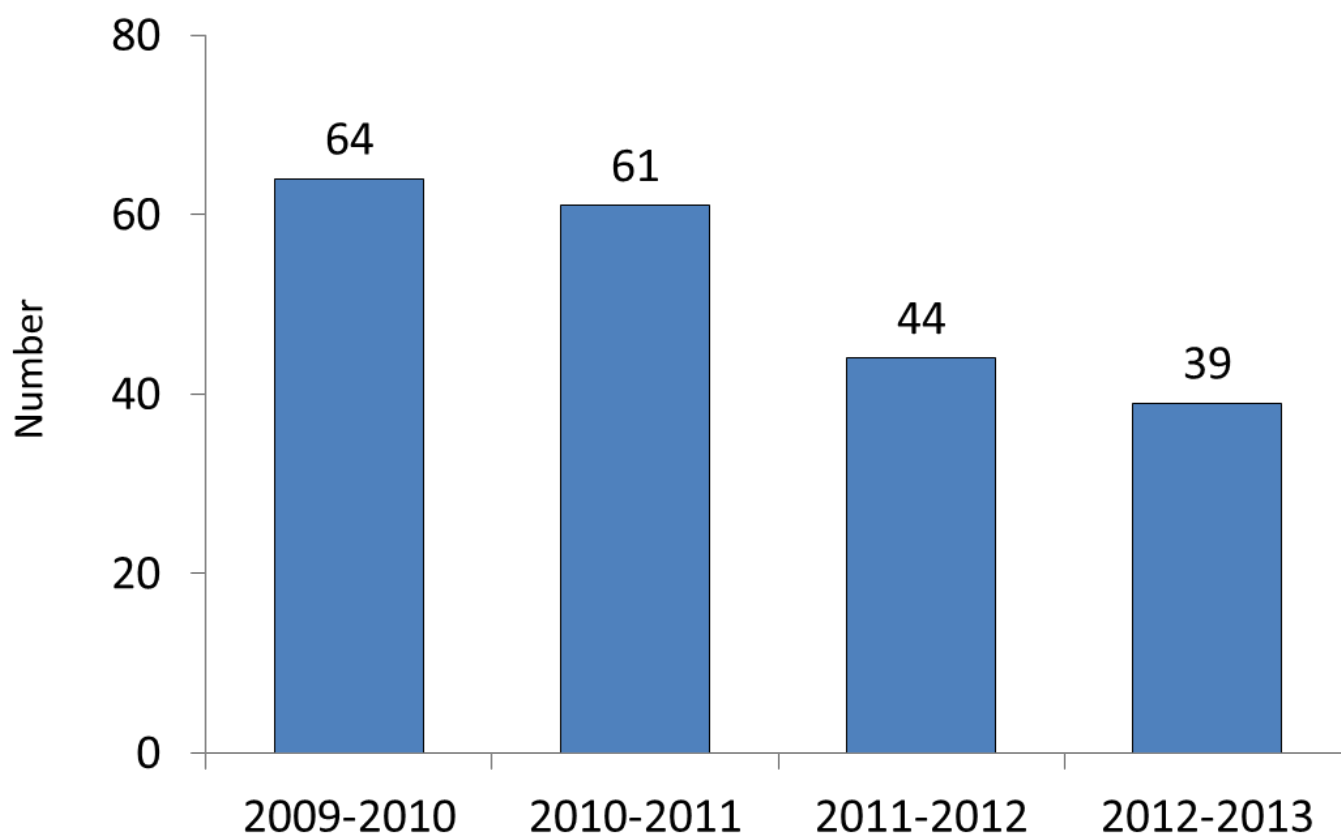
**Table 1. Outcomes of GAC Meetings in Recent Years**

GAC Decision	2009-2010		2010-2011		2011-2012		2012-2013	
	Number	Percent	Number	Percent	Number	Percent	Number	Percent
Admit Regular	6	9.4	8	13.1	7	15.9	7	16.3
Admit Conditional	50	78.1	39	63.9	28	63.6	27	62.8
Admit Provisional	6	9.4	10	16.4	3	6.8	4	9.3
Deny Admittance	4	6.3	8	13.1	9	20.5	5	11.6
Defer Case	2	3.1	2	3.3	0	0.0	0	0.0
Total Files <sup>1</sup>	64		61		44		39	

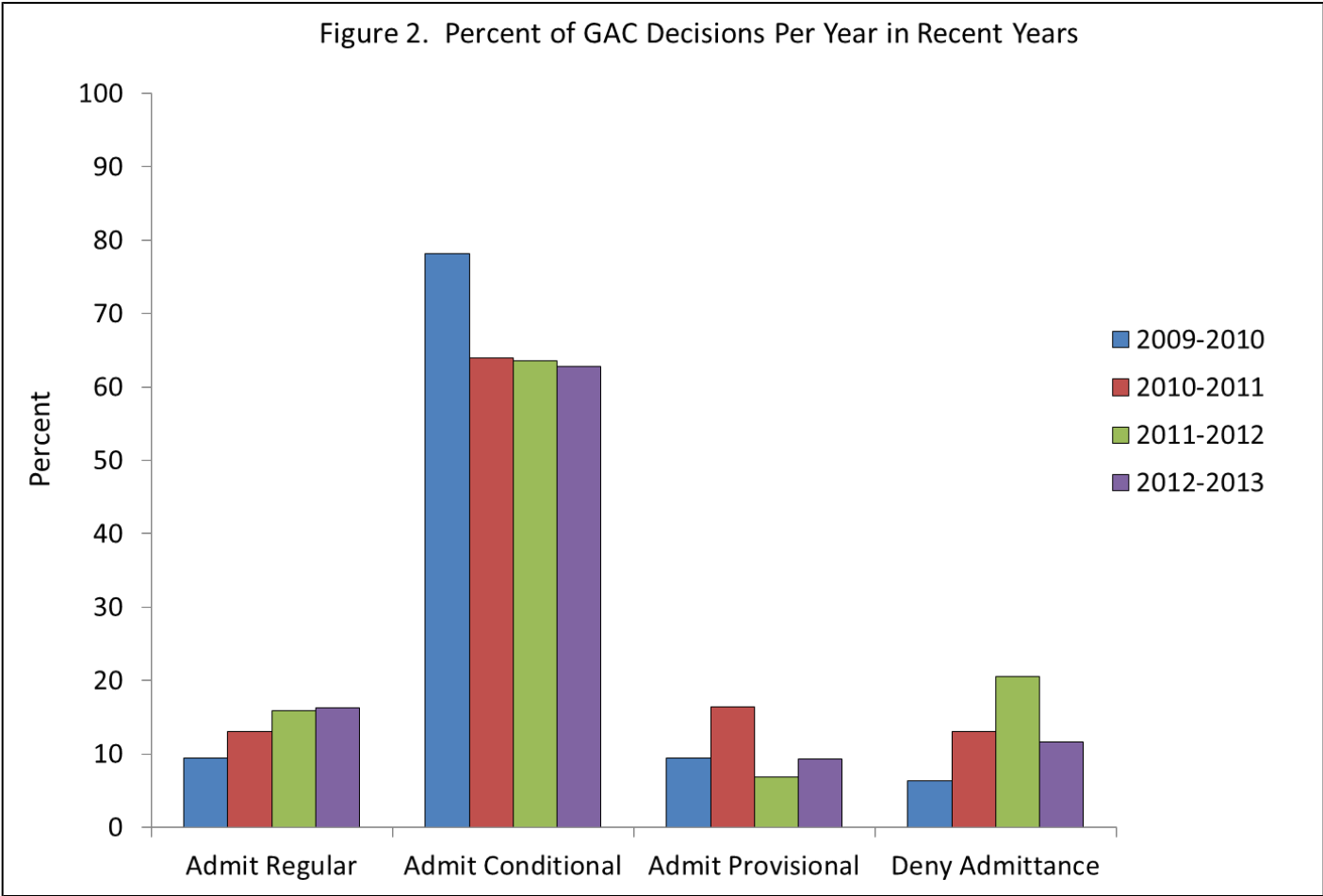
<sup>1</sup> Some applicants were granted simultaneous conditional and provisional admittance decisions, so percentages may sum to more than 100% and the number of decisions may not match the total number of files.

Overall, the total number of cases reviewed by the GAC has continued the declining trend highlighted in last year's report (Figure 1). Anecdotally, this decline may still reflect something of a "buyer's market" in graduate admissions currently. Similar to last year, committee members still believed that, in their own units (e.g., departments, schools), fewer marginal or questionable cases were referred to the GAC likely because of the large numbers of well-qualified students contacting these units expressing interest and eventually applying to the Graduate School.

**Figure 1. Number of Cases Reviewed by GAC Per Year in Recent Years**



Among the cases reviewed by the GAC, the relative percentages of each admission decision have varied only slightly from year to year, and the percentages of decisions this year (2012-2013) are relatively consistent with the past few years (Table 1, Figure 2). Most applicants are still accepted conditionally, but there have been higher rejection rates over the past three years (11.6% to 20.5%) compared to previous years (e.g., 3% in 2008-2009, 6.3% in 2009-2010).



In May, 2011, the Graduate Council approved a policy regarding students holding international professional degrees. Foreign students who followed a professional track in lieu of a four-year baccalaureate degree had been automatically disqualified by the Graduate School. The Graduate Council, therefore, put into place an appeals process for these students:

*"Graduate programs with an international applicant who does not have a four-year bachelor's or an appropriate alternative degree (e.g., a professional degree of at least four years duration), but who meets all other requirements for admission as a graduate student at OSU, may appeal the admissions denial to the Graduate Admissions Committee. The Graduate Admissions Committee, based on evidence presented by the graduate program, will determine if the student has sufficiently demonstrated preparedness to enter a graduate program and may provide an exception to allow admissions. The Graduate Council will review this policy in one year with input from the Graduate Admissions Committee."*

It had been anticipated that this policy would significantly expand the number and scope of cases reviewed by the GAC, with a concomitant increase in workload, but this has not been the case so far. Only four files in this category were reviewed last year (2011-2012) and all four were admitted as regular students. This year (2012-2013), the GAC also reviewed only four additional files in this category with two admitted as regular students and two admitted conditionally. Consistent with last year's report, the GAC would like to continue encouraging departments to fully document these cases by providing the data necessary to substantiate "the student's ability to communicate proficiently in writing, their preparation to conduct research, and their development of critical thinking," as required by the Graduate Council.

Two minor procedural changes to the way the GAC operates were implemented this past year. First, in

previous years, files for all cases were printed in hardcopy format and reviewed and discussed by committee members in person at each meeting. Committee members, however, believed that this approach sometimes led to feeling "rushed" to read and discuss several files during a meeting to allow it to adjourn in a timely manner. Committee members also found this approach to be inefficient given that most of the meeting time was quietly spent individually reading files. In response, a secure Sharepoint website was established where the Graduate School posted the .pdf of each file for members to review on their own time in advance of the meeting. The committee meeting time, therefore, was shortened dramatically and became more efficient because it was used only for discussing (not reading) files and making final decisions.

Second, in previous years, full committee meetings were sometimes held even if there was just a single file to review. Given that each file is reviewed by only two or three committee members, this was inefficient and wasted time for several members, especially when most of the committee members attended meetings to find only one or two files for review. In response, the committee decided that for meetings where only one or two files were to be reviewed, the review, discussion, and decision process would usually be handled electronically via the Sharepoint website and email. Taken together, the committee members unanimously supported these two minor operational changes, believed that they worked well during this first year of their implementation (2012-2013), and advocated for their continued use next year.

The committee would like to thank Rosemary Garagnani for her technical expertise and assistance, particularly in the area of international applications, and for facilitating the GAC meeting schedule and Sharepoint website.

cc: Rosemary Garagnani, Assistant Dean, Graduate School  
Dr. Brenda McComb, Dean, Graduate School

| [Home](#) | [Agendas](#) | [Bylaws](#) | [Committees](#) | [Elections](#) | [Faculty Forum Papers](#) | [Handbook](#) | [Meetings](#) | [Membership/Attendance](#) | [Minutes](#) |

Faculty Senate, Oregon State University, Corvallis, OR 97331-6203 · 541.737.4344

[Contact us with your comments, questions and feedback](#)

[Copyright](#) © 2008 Oregon State University | [Disclaimer](#)

Valid [xhtml](#).

# Faculty Senate

[Faculty Senate](#) » [Committees/Councils](#) » [Graduate Admissions Committee](#) » [Annual Reports](#) » 2011-2012 Annual Report

## Graduate Admissions Committee

### 2011-2012 Annual Report

DATE: August 7, 2012  
 TO: Executive Committee, Faculty Senate  
 FROM: Leah Minc, GAC Chair  
 SUBJECT: 2011-2012 Annual Report for the Graduate Admissions Committee  
 ATTACHMENT: Annual Activity Audit Report for the Graduate Admissions Committee (2010-2011)

Committee members: Elaine Pedersen, Mark Needham, Ricardo Mata-Gonzalez, Wade Marcum, Michael Vardaro  
 Ex-Officio: Rosemary Garagnani, For Director of Admissions

The Graduate Admissions Committee (GAC) operates under the Standing Rules of the Faculty Senate and under the policies and procedures formulated by the Graduate Council. The role of the GAC is to review files of Graduate School applicants who do not meet the minimum admission requirements. In the case of domestic applicants, the requirement is a grade point average (GPA) of 3.0 in the last 90 quarter hours or 60 semester hours of the first undergraduate degree. For international students a similar GPA requirement applies, plus either a TOEFL score of 550 (213 on the computer version of the test) or a degree completed at an accredited institution that offers all course work in English.

Cases not meeting these minimum requirements may be appealed to the GAC for review, with one of the following outcomes: admit regular, admit conditionally, admit provisionally, or deny admittance. For a conditional admit, the standard condition used is that students must earn a 3.0 (B) or better in each course of the first 18 hours of graded graduate credits; provisional acceptance usually involves additional coursework as imposed by the department. If students are denied admittance, they may still complete 24 hours of upper division or graduate work, earning a 3.0 or better to be accepted if the department approves the acceptance. Students who use this avenue are not reconsidered by the GAC unless they wish to petition based on less than 24 hours of completed work.

In 2006, the Faculty Senate voted to streamline the appeals process for those applications not meeting the minimum requirements. This policy change established that, if a department petitions for conditional admission for an applicant with a GPA of 2.75 or above, the admissions office will automatically grant the conditional admission as requested. If regular or provisional admission is requested, the file will go to the GAC for review. Similarly, if a department petitions for any form of admission for an applicant with a GPA below 2.75, the file will be reviewed by the GAC and a final admission decision will be made.

In reviewing appealed cases, the GAC considers a range of predictors for success in graduate school, including standardized test scores, letters of recommendation, and academic performance or work experience since the applicant earned a bachelor's degree. Each file is reviewed by at least two members, and all files are then discussed by the entire committee. In evaluating the file materials, the Committee looks for substantive and compelling evidence indicating that the applicant will succeed at the graduate level to justify waiving the admission requirements.

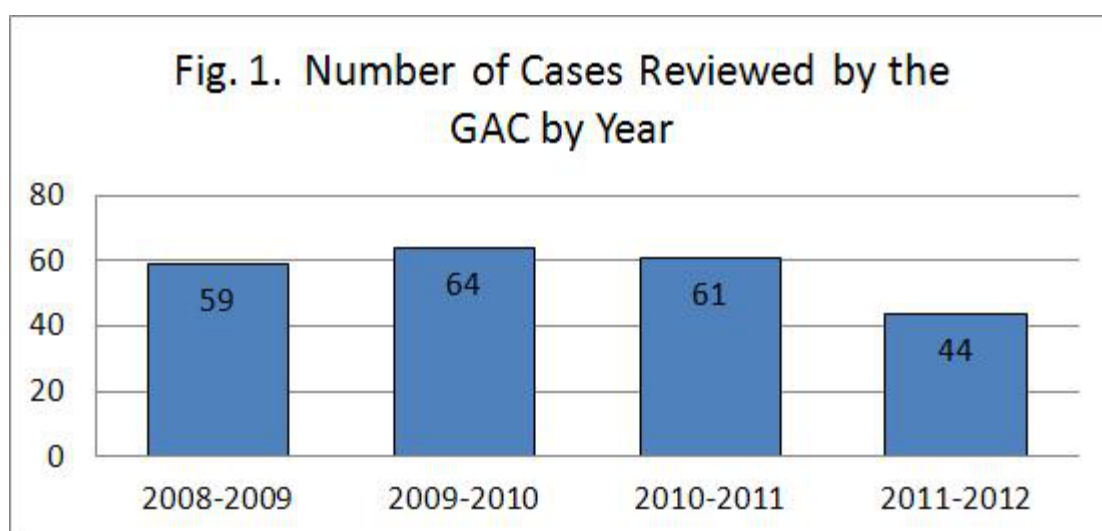
During the period 11 August 2011 through 20 June 2012, the Committee met 17 times on essentially a biweekly basis (see [Committee annual audit](#) prepared by the Graduate School Admissions). The GAC considered 44 cases (see Table 1). Of these, 32 (73%) were domestic and 12 (27%) were international. Seven cases (16%) were admitted with no conditions, 28 cases (64%) were admitted with conditions, 3 cases (7%) were admitted provisionally, and 9 cases (20%) were denied admission. Three applicants were granted simultaneous conditional and provisional status.

**Table 1. Outcomes of GAC Meetings Over the Past Four Years**

GAC Decision	2008-2009		2009-2010		2010-2011		2011-2012	
	Number	Percent	Number	Percent	Number	Percent	Number	Percent
Admit Regular	7	11.9%	6	9.4%	8	13.1%	7	15.9%
Admit Conditional	40	67.8%	50	78.1%	39	63.9%	28	63.6%
Admit Provisional	10	16.9%	6	9.4%	10	16.4%	3	6.8%
Deny Admittance	2	3.4%	4	6.3%	8	13.1%	9	20.5%
Defer Case	0	0.0%	2	3.1%	2	3.3%	0	0.0%
Total Files Reviewed*	59		64		61		44	

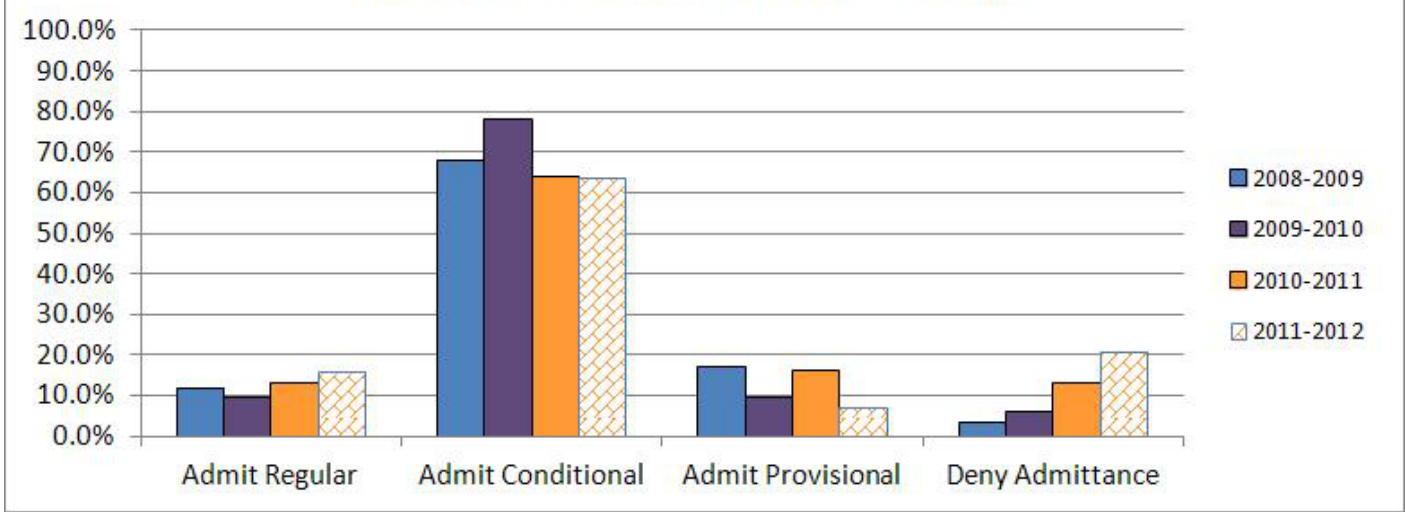
\*Some applicants were granted simultaneous conditional and provisional admittance, such that percentages may sum to more than 100%.

Overall, the number of cases reviewed by the GAC was down significantly this past year, to roughly 70% of the prior two academic years (Fig. 1). Anecdotally, the decline may reflect something of a "buyer's market" in graduate admissions currently. Committee members felt that, in their own departments and schools, fewer marginal or questionable cases were referred to the GAC because of the large numbers of well-qualified students applying to the Graduate School.



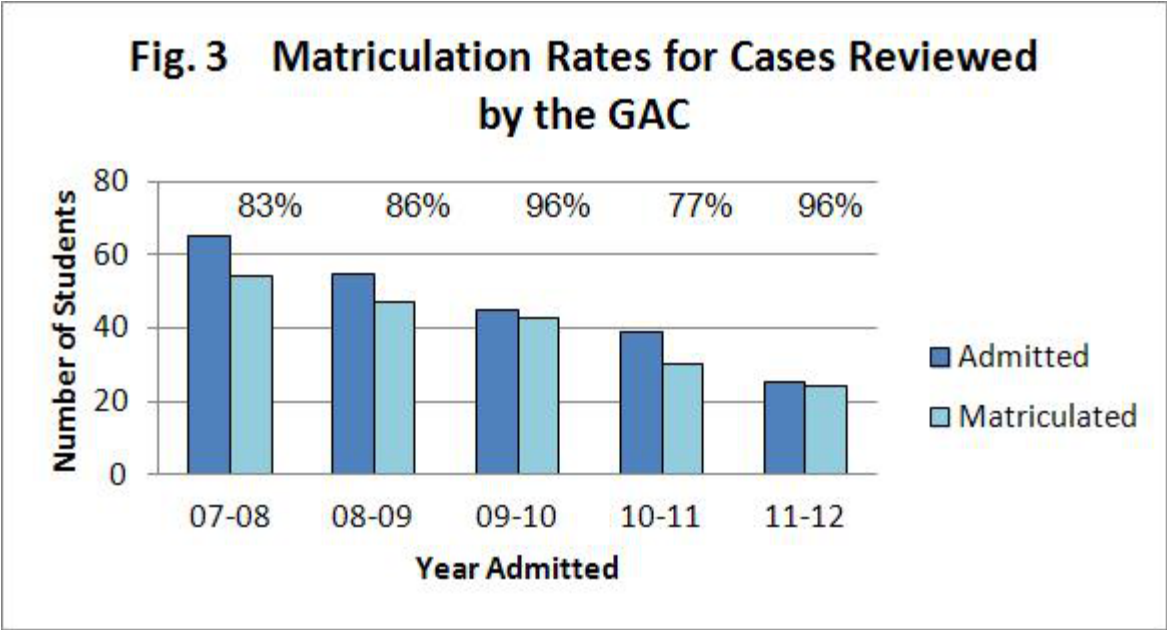
Among the cases reviewed by the GAC, the relative percentage of admission decisions has varied slightly from year to year (Table 1 and Fig. 2). Most applicants are accepted conditionally, but there has been an increasing rate of rejection over the past four years, from 3% in 2008/09, to 20% in 2011/12 (Fig. 2). The net result is a significant decline in the number of students admitted through the GAC review, from 65 in 2007-2008, to only 25 in 2011-2012 (Fig. 3).

Fig. 2 GAC Decisions 2008/09 - 2011/12



The matriculation and success rate of applicants admitted through the GAC review process is tracked by the Graduate School. Based on data from the past five academic years (2008-2009 through the present), at least three-quarters of students admitted through the GAC review process do enroll for graduate study; in four of the last five years the matriculation rate was significantly higher (83-96%). Matriculation rates do not appear to differ strongly by admission status; overall, 76% of regular-admit students and 80% of conditional-admit students enrolled in graduate programs at OSU.

Fig. 3 Matriculation Rates for Cases Reviewed by the GAC



As a group, applicants reviewed by the GAC do well in graduate school. Of the 192 students enrolled over the past five years following GAC review, only nine (< 5%) did not maintain a cumulative GPA above the required 3.0. Of these failures, eight had been conditionally admitted, suggesting that this group may be academically at risk. However, the mean GPA of conditional-admit students is actually somewhat higher than of regular-admit cases (3.60 vs. 3.43; see Table 2), suggesting that the majority of these students do make good on the opportunity offered to them by OSU.

**Table 2. Mean GPA by Admission Status and Year**

Year Admitted	Mean GPA	
	Regular	Conditional
2008	2.95	3.67
2009	3.46	3.60
2010	3.63	3.59
2011	3.10	3.48
2012	3.09	3.57
<b>Total</b>	<b>3.43</b>	<b>3.60</b>

Of final note is that this past academic year was a trial period for a policy change approved by the Graduate Council in May, 2011 regarding students holding international professional degrees. Foreign students who followed a professional track in lieu of a four-year baccalaureate degree had been automatically disqualified by the Graduate School. The Graduate Council therefore put into place an appeals process for these students:

*"Graduate programs with an international applicant who does not have a four-year bachelor's or an appropriate alternative degree, e.g. a professional degree of at least four years duration, but who meets all other requirements for admission as a graduate student at OSU, may appeal the admissions denial to the Graduate Admissions Committee. The Graduate Admissions Committee, based on evidence presented by the graduate program, will determine if the student has sufficiently demonstrated preparedness to enter a graduate program and may provide an exception to allow admissions. The Graduate Council will review this policy in one year with input from the Graduate Admissions Committee."*

It had been anticipated that this policy would significantly expand the scope of cases reviewed by the GAC, with a concomitant increase in workload, but this was not the case. Only four files in this category were reviewed in 2011-2012; all four were admitted as regular students. Two students were foreign professionals applying to the MS program in Veterinary Science, one applied to the MPH program, and one to the PhD program in Chemistry. Although these four cases were relatively clear-cut, the GAC would like to strongly encourage referring departments to more fully document these cases in the future. Specifically, we ask that departments provide the data necessary to substantiate "the student's ability to communicate proficiently in writing, their preparation to conduct research, and their development of critical thinking", as required by the Graduate Council.

No procedural changes to the way the Committee operates were implemented this past year.

The committee would like to thank Assistant Dean Rosemary Garagnani for her technical expertise and assistance, particularly in the area of international applications, and for facilitating the GAC meeting schedule.

cc: Rosemary Garagnani, Assistant Dean, Graduate School  
Dr. Brenda McComb, Dean, Graduate School

| [Home](#) | [Agendas](#) | [Bylaws](#) | [Committees](#) | [Elections](#) | [Faculty Forum Papers](#) | [Handbook](#) | [Meetings](#) | [Membership/Attendance](#) | [Minutes](#) |

Faculty Senate, Oregon State University, Corvallis, OR 97331-6203 · 541.737.4344

[Contact us with your comments, questions and feedback](#)

[Copyright](#) © 2008 Oregon State University | [Disclaimer](#)

Valid [xhtml](#).

# Faculty Senate

[Faculty Senate](#) » [Committees/Councils](#) » [Graduate Admissions Committee](#) » [Annual Reports](#) » 2010-2011 Annual Report

## Graduate Admissions Committee

### 2010-2011 Annual Report

DATE: July 15, 2011  
 TO: Executive Committee, Faculty Senate  
 FROM: Leah Minc, Chair (2011) and Temesgen Hailemariam, Chair (2010) Graduate Admissions Committee  
 SUBJECT: 2010-2011 Annual Report for the Graduate Admissions Committee  
 ATTACHMENT: Annual Activity Audit Report for the Graduate Admissions Committee (2010-2011)

#### Committee members:

Leah Minc, Chair '12	Anthropology
Temesgen Hailemariam '11	Forest Resources
Wade Marcum '12	Nuclear Engineering & Radiation Health Physics
Elaine Pedersen '13	Design & Human Environment
Ricardo Mata-Gonzalez '13	Rangeland Ecology and Management
Mark Needham '13	Forest Ecosystems & Society

Ex-Officio: Rosemary Garagnani, for Director of Admissions

The Graduate Admissions Committee (GAC) operates under the Standing Rules of the Faculty Senate and under the policies and procedures formulated by the Graduate Council. The role of the GAC is to review files of Graduate School applicants who do not meet the minimum admission requirements. In the case of domestic applicants, the requirement is a grade point average (GPA) of 3.0 in the last 90 quarter hours or 60 semester hours of the first undergraduate degree. For international students, a similar GPA requirement applies, plus either a TOEFL score of 550 (213 on the computer version of the test) or a degree completed at an accredited institution that offers all course work in English.

Cases not meeting these minimum requirements may be appealed to the GAC for review, with one of the following outcomes: admit regular, admit conditionally, admit provisionally, or deny admittance. The standard condition used is that students must earn a 3.0 (B) or better in each course of the first 18 hours of graded graduate credits; provisional acceptance usually involves additional coursework as imposed by the department. If students are rejected, they may still complete 24 hours of upper division or graduate work, earning a 3.0 or better to be accepted if the department approves the acceptance. Students who use this avenue are not reconsidered by the GAC unless they wish to petition based on less than 24 hours of completed work.

In 2006, the Faculty Senate voted to streamline the appeals process for those applications not meeting the minimum requirements. This policy change established that if a department petitions for conditional admission for an applicant with a GPA of 2.75 or above, the admissions office will automatically grant the conditional admission as requested. If regular or provisional admission is requested, the file will go to the GAC for review. Similarly, if a department petitions for any form of admission for an applicant with a GPA below 2.75, the file will be reviewed by the GAC and a final admission decision will be made.

In reviewing appealed cases, the GAC considers a range of predictors for success in graduate school, including standardized test scores, letters of recommendation, and academic performance or work experience since the applicant earned a bachelor's degree. Each file is reviewed by at least two members, and all files are then discussed by the entire committee. In evaluating the file materials, the Committee looks for substantive and compelling evidence indicating that the applicant will succeed at the graduate level to justify

waiving the admission requirements.

During the period 4 August 2010 through 14 July 2011, the Committee met 20 times on essentially a biweekly basis (see [attached copy](#) of the Committee annual audit prepared by the Graduate School Admissions). The GAC considered 61 cases. Of these, 41 (67.2%) were domestic and 20 (32.8%) international. Eight (13.1%) were admitted with no conditions, 39 (63.9%) were admitted with conditions, 10 (16.4%) were admitted provisionally, 8 (13.1%) were denied admission, and 2 (3.3%) were deferred, pending additional information. Three applicants were granted simultaneous conditional and provisional status.

The relative percentage of these admission decisions is consistent with the past two years (Table 1). Most applicants are accepted conditionally, but there has been a slightly higher rejection rate this past year than prior.

The success rate of applicants admitted through the GAC review process is tracked by the Graduate School. Based on data from the past three academic years (2009, 2010, and 2011 to present), these applicants typically do very well. During this time period, 91 applicants who had been accepted conditionally were tracked and their cumulative GPA reported. On average, this group maintained a cumulative GPA of 3.64, with only six Masters Students (6.6% of conditional admissions) failing to meet the minimum GPA of 3.0. Stated alternatively, over 93% of cases recommended by the GAC for admission do succeed in graduate school.

No procedural changes to the way the Committee operates were implemented this past year. In November, 2010, the Faculty Senate had recommended that the GAC consider adopting an on-line review process in order to shorten the wait-time for files to be evaluated and to reduce the time commitment for committee members. GAC members discussed the pros and cons of different streamlining procedures extensively, but felt strongly that files might not get a thorough and fair review without face-to-face discussions and additional inputs from committee members. The current procedure provides a much better forum for transparency and genuine discussion. In addition, none of the current members felt the twice-monthly meeting schedule was onerous, and attendance this past year was excellent (even with the reduced committee membership). In the end, the Committee unanimously decided to continue the current review system and not to implement an abbreviated or electronic review system.

One policy change initiated by the Graduate Council will expand the scope of cases reviewed by the GAC. In May, 2011, the Graduate Council approved an appeals process for students holding international professional degrees, but without the required baccalaureate degree:

*"Graduate programs with an international applicant who does not have a four-year bachelor's or an appropriate alternative degree, e.g. a professional degree of at least four years duration, but who meets all other requirements for admission as a graduate student at OSU, may appeal the admissions denial to the Graduate Admissions Committee. The Graduate Admissions Committee, based on evidence presented by the graduate program, will determine if the student has sufficiently demonstrated preparedness to enter a graduate program and may provide an exception to allow admissions. The Graduate Council will review this policy in one year with input from the Graduate Admissions Committee."*

The GAC and the Graduate Council jointly drafted an [appeals form](#) to be completed by the department when referring such a case to the GAC. The form is designed to substantiate the student's ability to communicate proficiently in writing, their preparation to conduct research, and their development of critical thinking - skills the Graduate Council identified as critical for success in graduate school. The GAC reviewed (and admitted) the first student under purview of this new policy. In the upcoming academic year, a significant number of cases are expected under this new ruling, and this may require an expansion of GAC membership to handle the workflow.

cc: Rosemary Garagnani, Assistant Dean, Graduate School  
Dr. Brenda McComb, Dean, Graduate School



# Faculty Senate

[Faculty Senate](#) » [Committees/Councils](#) » [Graduate Admissions Committee](#) » [Annual Reports](#) » 2009-2010 Annual Report

## Graduate Admissions Committee

### 2009-2010 Annual Report

DATE: August 4, 2010  
TO: Executive Committee, Faculty Senate  
FROM: Temesgen Hailemariam, Chair (2009-2010), Graduate Admissions Committee  
Committee members: Rayetta Beall, Leah Minc, Hanna Rempel, Elaine Pedersen, and Roy Haggerty  
Ex-Officio: Rosemary Garagnani, For Director of Admissions  
SUBJECT: 2009-2010 Annual Report for the Graduate Admissions Committee  
ATTACHMENT: Annual Activity Audit Report for the Graduate Admissions Committee

The Graduate Admissions Committee reviews files of Graduate School applicants who do not meet the minimum admission requirements. In the case of domestic applicants, the requirement is a grade point average (GPA) of 3.0 in the last 90 quarter hours or 60 semester hours of the first undergraduate degree. For international students a similar GPA requirement applies, plus either a TOEFL score of 550 (213 on the computer version of the test) or a degree completed at an accredited institution that offers all course work in English. The committee considers other predictors of success in graduate programs including standardized test scores, letters of recommendation, and academic performance or work experience since the applicant earned a bachelor's degree. In evaluating such materials, the Committee looks for substantive and compelling evidence indicating that the applicant will succeed at the graduate level to justify waiving the admission requirements. The Graduate Admissions Committee (GAC) operates under the Standing Rules of the Faculty Senate and under the policies and procedures formulated by the Graduate Council.

During the period 1 August 2009 through 30 June 2010, the Committee met 15 times on essentially a biweekly basis (see [attached](#) copy of the Committee annual audit prepared by the Graduate School Admissions). The GAC considered 64 cases. Of these, 54 (84.4%) were domestic and 10 (15.6%) international. Six (9.4%) were admitted with no conditions, 50 (78.1%) were admitted with conditions, 6 (9.4%) were admitted provisionally, 4 (6.3%) were denied admission, and 2 (3.1%) were deferred. Two applicants were granted simultaneous conditional and provisional status.

The committee continued to use the following categories for action: A (admit), P (admit with departmental provisions), C (admit with condition, standard unless otherwise specified), D (defer for additional material), and R (reject). The standard condition that is used is that students must earn a 3.0 (B) or better in each course of the first 18 hours of graded graduate credits. If students are rejected, they may still complete 24 hours of upper division or graduate work, earning a 3.0 or better to be accepted if the department approves the acceptance. Students who use this avenue are not reconsidered by the GAC unless they wish to petition based on less than 24 hours of completed work.

No change was made in the way the committee operated this year. Records of previous years showed that the period from October through March usually had a small number of files to be considered at each meeting. The committee used list serve to request members to come to each of the meetings between November and March in order to reduce the workload on the whole committee. This worked quite well, and for occasional meeting dates for which no files needed to be reviewed, the meetings were cancelled. This year, the largest single meeting had 11 files to review. The GAC requires each file to be reviewed by at least two members, and all files are then discussed by the entire committee. With 11 files, it is helpful to have at least five members present. Members attended meetings in roughly equal amounts, with the exception of one member who could not attend most meetings.

cc: Rosemary Garagnani, Assistant Dean, Graduate School  
Dr. Martin Fisk, Interim Dean, Graduate School

Faculty Senate, Oregon State University, Corvallis, OR 97331-6203 · 541.737.4344

[Contact us with your comments, questions and feedback](#)

[Copyright](#) © 2008 Oregon State University | [Disclaimer](#)

Valid [xhtml](#).

# Faculty Senate

[Faculty Senate](#) » [Committees/Councils](#) » [Graduate Admissions Committee](#) » [Annual Reports](#) » 2006-2007 Annual Report

## Graduate Admissions Committee

### 2006-2007 Annual Report

DATE: 31 July, 2007  
TO: Executive Committee, Faculty Senate  
FROM: Bill Warnes, Chair (2006-07) Graduate Admissions Committee  
Members: Andy Karplus, Taifo Mahmud, Jim Richman, Michael Taylor, Hilary Egna, Ricardo Matano, Peter Saunders and Ex-officio, Rosemary Garagnani  
SUBJECT: 2006-07 Annual Report for the Graduate Admissions Committee

The Graduate Admissions Committee reviews files of Graduate School applicants who do not meet the minimum admission requirements. In the case of domestic applicants, the requirement is a grade point average (GPA) of 3.0 in the last 90 quarter hours or 60 semester hours of the first undergraduate degree. For international students a similar GPA requirement applies, plus either a TOEFL score of 550 (213 on the computer version of the test) or a degree completed at an accredited institution that offers all course work in English. The committee considers other predictors of success in graduate programs including standardized test scores, letters of recommendation, and academic performance or work experience since the applicant earned a bachelor's degree. In evaluating such materials, the Committee looks for substantive and compelling evidence indicating that the applicant will succeed at the graduate level to justify waiving the admission requirements. The Graduate Admissions Committee (GAC) operates under the Standing Rules of the Faculty Senate and under the policies and procedures formulated by the Graduate Council.

During the period 1 August 2006 through 30 June 2007, the Committee met 19 times on essentially an every-other-week basis (see attached copy of the Committee annual audit prepared by the Office of Admissions). The GAC considered 88 cases. Of these, 65 (74%) were domestic and 23 (26%) international. Of the domestic cases, 17 (26%) were admitted with no conditions, 38 (58%) were admitted with conditions, 3 (5%) were admitted provisionally, 5 (8%) were denied admission, and 4 (6%) were deferred. Of the international cases, 5 (22%) were admitted with no conditions, 14 (61%) were admitted with conditions, 1 (4%) was admitted with provisions, 3 (13%) were denied, and 0 (0) were deferred. These figures are generally consistent with the previous several years of activity by the committee.

The committee continued to use the following categories for action: A (admit), P (accept with departmental provisions), C (accept with conditions, standard unless otherwise specified), D (defer for more information), R (reject). The standard condition that is used is that students must earn a 3.0 (B) or better in each course of the first 18 hours of graded graduate credits. If students are rejected, they may still complete 24 hours of upper division or graduate work, earning a 3.0 or better to be accepted if the department approves the acceptance. Students who use this avenue are not reconsidered by the GAC unless they wish to petition based on less than 24 hours of completed work.

One significant change was made in the way the committee operated this year. Records of previous years showed that the period from October through March usually had a small number of files to be considered at each meeting. The committee chose to assign only three members to come to each of the meetings between November and March in order to reduce the workload on the whole committee. This worked quite well, and for occasional meeting dates for which no files needed to be reviewed, the meetings were cancelled. This year, the largest single meeting had 11 files to review. The GAC requires each file to be reviewed by at least two members, and all files are then discussed by the entire committee. With 11 files, it is helpful to have at least five members present. Members attended meetings in roughly equal amounts, with the exception of one member who did not come to any meetings.

#### RECOMMENDATIONS:

1. Plan a reduced number of members in attendance over the time period from 1 October through 31 March.

The small number of files to review justifies a smaller number of members present.

2. Consider reducing the number of members on the committee to six or seven, rather than eight. The present workload would fit well with six members and still allow for one absence during peak activity times.

| [Home](#) | [Agendas](#) | [Bylaws](#) | [Committees](#) | [Elections](#) | [Faculty Forum Papers](#) | [Handbook](#) | [Meetings](#) | [Membership/Attendance](#) | [Minutes](#) |

Faculty Senate, Oregon State University, Corvallis, OR 97331-6203 · 541.737.4344

[Contact us with your comments, questions and feedback](#)

[Copyright](#) © 2008 Oregon State University | [Disclaimer](#)

Valid [xhtml](#).

# Faculty Senate

[Faculty Senate](#) » [Committees/Councils](#) » [Graduate Admissions Committee](#) » [Annual Reports](#) » 2005-2006 Annual Report

## Graduate Admissions Committee

### 2005-2006 Annual Report

DATE: 31 July 2006

TO: Executive Committee, Faculty Senate, Oregon State University

FROM: Rakesh Gupta, Chair  
Committee members: Ping Ge, Valerie Rosenberg, Bill Warnes, Hua-Yu Li (v. Bird), Taifo Mahmud, Jim Richman

SUBJECT: 2005-2006 Annual Report for the Graduate Admissions Committee

ATTACHMENT:

1. [2005 – 2006 Audit Report for the Graduate Admissions Committee](#)
2. [Proposal submitted the Faculty Senate Executive Committee](#)
3. [Process to streamline the appealed applications for admission to the graduate school](#)

The Graduate Admissions Committee reviews files of Graduate School applicants who do not meet the minimum admission requirements. In the case of domestic applicants, the requirement is a grade point average (GPA) of 3.0 in the last 90 quarter hours or 60 semester hours of the first undergraduate degree. For international students a similar GPA requirement applies, plus either a TOEFL score of 550 (213 on the computer version of the test) or a degree completed at an accredited institution that offers all course work in English. The committee considers other predictors of success in graduate programs including standardized test scores, letters of recommendation, and academic performance or work experience since the applicant earned a bachelor's degree. In evaluating such materials, the Committee looks for substantive and compelling evidence indicating that the applicant will succeed at the graduate level to justify waiving the admission requirements. The Graduate Admissions Committee (GAC) operates under the Standing Rules of the Faculty Senate and under the policies and procedures formulated by the Graduate Council.

During the period 1 July 2005 through 30 June 2006, the Committee met 24 times on essentially an every-other-week basis (see attached copy of the Committee annual audit prepared by the Office of Admissions). The GAC considered 98 cases. Thirty four (35%) were admitted with no conditions, 54 (55%) were admitted with conditions, 12 (12%) were admitted provisionally (some simultaneously with conditional admit), 3 (3%) were denied admission, and 3 (3%) were deferred. Please see attached Annual Audit report prepared by the Admissions Office for more details.

The committee continued to use the following categories for action: A (accept), P (accept with departmental provisions), C (accept with condition, standard unless otherwise specified), D (defer for more information), and R (reject). The standard condition that is used is that students must earn a 3.0 (B) or better in each course of the first 18 hours of graded graduate credits. If students are rejected, they may still complete 24 hours of upper division or graduate work, earning a 3.0 or better to be accepted if the department approves the acceptance. Students who use this avenue are not reconsidered by the GAC unless they wish to petition based on less than 24 hours of completed work. As noted in last year's report, the committee had discussed whether the form used for reviewing files needed to include "provisions." The decision was to include "admit with departmental provisions". In this way, there is a way to note that the department asked for provisions. The GAC does not put provisions on an acceptance, only conditions.

The committee sent one proposal to the Executive Committee this year. The proposal (enclosed) sought to streamline the GAC process by allowing staff in the Admissions Office to accept students' whose GPA was 2.75 or above, and were being requested only conditional admission. The proposal was approved by the

Faculty Senate Executive Committee on March 7th, 2006. The new policy which can be used by the future GACs is attached. It will also be on the Faculty Senate web page.

The committee also discussed the report submitted by two consultants hired by the graduate school to review graduate admissions process at Oregon State University<sup>1</sup>. One of their recommendations was "Discontinue the graduate Admission Committee and move the process for consideration of exceptions to the University's baseline standards to the Graduate School". The committee felt that some kind of faculty over site is needed in the review process for appealed cases whether it is in GAC or some place else.

<sup>1</sup>Council of Graduate Schools (CGS) Consultancy Report – Graduate Admissions Review Process, Oregon State University (March 22, 2006). Submitted by Daniel J. Bannett and Robert S. Sowell

# Faculty Senate

[Faculty Senate](#) » [Committees/Councils](#) » [Graduate Admissions Committee](#) » [Annual Reports](#) » 2004-2005 Annual Reports

## Graduate Admissions Committee

### 2004-2005 Annual Reports

DATE: July 14, 2005  
TO: Executive Committee, Faculty Senate  
FROM: Eileen Waldschmidt, Chair (2004-2005), Graduate Admissions Committee  
Committee members: Sunnil Khanna, Ping Ge, Rakesh Gupta, Valerie Rosenberg, Karyn Bird, Lani Roberts, Bill Warnes  
SUBJECT: 2004-2005 Annual Report for the Graduate Admissions Committee  
ATTACHMENT: [Audit Report](#) for the Graduate Admissions Committee

The Graduate Admissions Committee reviews files of Graduate School applicants who do not meet the minimum admission requirements. In the case of domestic applicants, the requirement is a grade point average (GPA) of 3.0 in the last 90 quarter hours or 60 semester hours of the first undergraduate degree. For international students a similar GPA requirement applies, plus either a TOEFL score of 550 (213 on the computer version of the test) or a degree completed at an accredited institution that offers all course work in English. The committee considers other predictors of success in graduate programs including standardized test scores, letters of recommendation, and academic performance or work experience since the applicant earned a bachelor's degree. In evaluating such materials, the Committee looks for substantive and compelling evidence indicating that the applicant will succeed at the graduate level to justify waiving the admission requirements. The Graduate Admissions Committee (GAC) operates under the Standing Rules of the Faculty Senate and under the policies and procedures formulated by the Graduate Council. The GAC requested that the Faculty Senate change the GAC Standing Rules to assure that members of the committee represent different Colleges.

During the period 1 July 2004 through 30 June 2005, the Committee met 24 times on essentially an every-other-week basis (see attached copy of the Committee annual audit prepared by the Office of Admissions). The GAC considered 105 cases. Of these, 85 (81%) were domestic and 20 (19%) international. Of the domestic cases, 36 (34%) were admitted with no conditions, 62 (59%) were admitted with conditions, 17 (16%) were admitted provisionally, 0 (0%) were denied admission, and 5 (5%) were deferred. Of the international cases, 3 (2%) were admitted with no conditions, 15 (14%) were admitted with conditions, 2 (2%) were admitted with provisions, 2 (2%) were deferred, and 0 (0) were denied. Departments began to establish acceptable provisions for consideration for admission, thus decreasing the need for deferrals over previous years.

The committee continued to use the following categories for action: A (accept), P (accept with departmental provisions), C (accept with condition, standard unless otherwise specified), D (defer for more information), R (reject). The standard condition that is used is that students must earn a 3.0 (B) or better in each course of the first 18 hours of graded graduate credits. If students are rejected, they may still complete 24 hours of upper division or graduate work, earning a 3.0 or better to be accepted if the department approves the acceptance. Students who use this avenue are not reconsidered by the GAC unless they wish to petition based on less than 24 hours of completed work. As noted in last year's report, the committee had discussed whether the form used for reviewing files needed to include "provisions." The decision was to include "admit with departmental provisions". In this way, there is a way to note that the department asked for provisions. The GAC does not put provisions on an acceptance, only conditions.



# Faculty Senate

[Faculty Senate](#) » [Committees/Councils](#) » [Graduate Admissions Committee](#) » [Annual Reports](#) » 2003-2004 Annual Reports

## Graduate Admissions Committee

### Annual Reports 2003-2004

DATE: July 8, 2004  
 TO: Executive Committee, Faculty Senate  
 FROM: Eileen Waldschmidt, Chair (2003-2004), Graduate Admissions Committee  
 COMMITTEE members: Sunnil Khanna, Maggie Niess, Christine PingGe, and Karen White  
 SUBJECT: 2003-2004 Annual Report for the Graduate Admissions Committee  
 ATTACHMENT: [Audit Report](#) for the Graduate Admissions Committee

The Graduate Admissions Committee reviews files of Graduate School applicants who do not meet the minimum admission requirements. In the case of domestic applicants, the requirement is a grade point average (GPA) of 3.0 in the last 90 quarter hours or 60 semester hours of the first undergraduate degree. For international students a similar GPA requirement applies, plus either a TOEFL score of 550 (213 on the computer version of the test) or a degree completed at an accredited institution that offers all course work in English. The committee considers other predictors of success in graduate programs including standardized test scores, letters of recommendation, and academic performance or work experience since the applicant earned a bachelor's degree. In evaluating such materials, the Committee looks for substantive and compelling evidence indicating that the applicant will succeed at the graduate level to justify waiving the admission requirements. The Graduate Admissions Committee (GAC) operates under the Standing Rules of the Faculty Senate and under the policies and procedures formulated by the Graduate Council. The GAC requested that the Faculty Senate change the GAC Standing Rules to assure that members of the committee represent different Colleges.

During the period 1 July 2003 through 30 June 2004, the Committee met 21 times on essentially an every-other-week basis (see attached copy of the Committee annual audit prepared by the Office of Admissions). The GAC considered 103 cases. Of these, 82 (80%) were domestic and 21 (20%) international. Thirty-three (32%) were admitted with no conditions, 63 (61%) were admitted with conditions, 0 (0%) were admitted provisionally, 1 (9%) was denied admission, and 6 (6%) were deferred. Departments began to establish acceptable provisions for consideration for admission, thus decreasing the need for deferrals over previous years.

The committee continued to use the following categories for action: A (accept), P (accept with departmental provisions), C (accept with condition, standard unless otherwise specified), D (defer for more information), and R (reject). The standard condition that is used is that students must earn a 3.0 (B) or better in each course of the first 18 hours of graded graduate credits. If students are rejected, they may still complete 24 hours of upper division or graduate work, earning a 3.0 or better to be accepted if the department approves the acceptance. Students who use this avenue are not reconsidered by the GAC unless they wish to petition based on less than 24 hours of completed work. As noted in last year's report, the committee had discussed whether the form used for reviewing files needed to include "provisions." The decision was to include "admit with departmental provisions". In this way, there is a way to note that the department asked for provisions. The GAC does not put provisions on an acceptance, only conditions.

The committee sent two proposals to the Executive Committee this year. One proposal sought to streamline the GAC process by allowing staff in Admissions to accept students' whose GPA was 3.8 or above. After reconsideration, the committee decided to withdraw this proposal. The second proposal was for a change in the standing rules so that selection of committee members would "ensure adequate representation of International Education." This change in the standing rules was approved by the Faculty Senate during their meeting on June 10, 2004.



# Faculty Senate

[Faculty Senate](#) » [Committees/Councils](#) » [Graduate Admissions Committee](#) » [Annual Reports](#) » Annual Reports 2002-2003

## Graduate Admissions Committee

### Annual Reports 2002-2003

DATE: July 1, 2003  
 TO: Executive Committee, Faculty Senate  
 FROM: Karyn E. Bird, Chair (2002-03), Graduate Admissions Committee  
 Committee members: Sunnil Khanna, Maggie Niess, Bill Smart, Rick Vong, Eileen Waldschmidt, and Karen White  
 SUBJECT: 2002-2003 Annual Report for the Graduate Admissions Committee  
[2002-2003 Annual Audit](#)

The Graduate Admissions Committee reviews files of Graduate School applicants who do not meet the minimum admission requirements. In the case of domestic applicants, the requirement is a grade point average (GPA) of 3.0 in the last 90 quarter hours or 60 semester hours of the first undergraduate degree. For international students a similar GPA requirement applies, plus either a TOEFL score of 550 (213 on the computer version of the test) or a degree completed at an accredited institution that offers all course work in English. The committee considers other predictors of success in graduate programs including standardized test scores, letters of recommendation, and academic performance or work experience since the applicant earned a bachelor's degree. In evaluating such materials, the Committee looks for substantive and compelling evidence indicating that the applicant will succeed at the graduate level to justify waiving the admission requirements. The Graduate Admissions Committee (GAC) operates under the Standing Rules of the Faculty Senate and under the policies and procedures formulated by the Graduate Council. The GAC requested that the Faculty Senate change the GAC Standing Rules to assure that members of the committee represent different Colleges.

During the period 1 July 2002 through 30 June 2003, the Committee met 23 times on essentially an every-other-week basis (see attached copy of the Committee annual audit prepared by the Office of Admissions). The GAC considered 113 cases. Of these, 82 were domestic and 31 international. Fifty-five (49%) were admitted with no conditions, 34 (30%) were admitted with conditions, 12 (11%) were admitted provisionally, 5 (4%) were denied admission, and 7 (6%) were deferred. Departments began to establish acceptable provisions for consideration for admission, thus decreasing the need for deferrals over previous years.

During this year, the committee continued to use the following categories for action: A (accept), P (accept with departmental provisions), C (accept with condition, standard unless otherwise specified), D (defer for more information), R (reject). The standard condition that is used is that students must earn a 3.0 (B) or better in each course of the first 18 hours of graded graduate credits. If students are rejected, they may still complete 24 hours of upper division or graduate work, earning a 3.0 or better to be accepted if the department approves the acceptance. Students who use this avenue are not reconsidered by the GAC unless they wish to petition based on less than 24 hours of completed work.

In addition to this routine activity, Karyn Bird served as a non-voting member of the Graduate Council to provide the GAC perspective on issues considered by the Council. The primary concern during the past year has been with the Departmental Provision Admit versus the Conditional Admit. The Department Provision is monitored by the Department while the Conditional Admit is monitored by the Graduate School. The GAC recommended to the Graduate Council that the requirements of the Conditional Admit be changed such that students are able to (1) hold Graduate Teaching/Research Assistantships and (2) are able to file a Graduate Program before the terms of the conditional admission are met. This recommendation was considered by the Graduate Council and passed. With these changes, the GAC began using the Conditional Admit rather than the Departmental Provisional Admit, although, if Departments list provisions, the GAC includes those provisions in its decision. The GAC will no longer have a separate category for provisional admission.

cc: Michele Sandlin, Admissions  
Dr. Sally Francis, Interim Dean, Graduate School

| [Home](#) | [Agendas](#) | [Bylaws](#) | [Committees](#) | [Elections](#) | [Faculty Forum Papers](#) | [Handbook](#) | [Meetings](#) | [Membership/Attendance](#) | [Minutes](#) |

Faculty Senate, Oregon State University, Corvallis, OR 97331-6203 · 541.737.4344  
[Contact us with your comments, questions and feedback](#)  
[Copyright](#) © 2008 Oregon State University | [Disclaimer](#)  
Valid [xhtml](#).

# Faculty Senate

[Faculty Senate](#) » [Committees/Councils](#) » [Graduate Admissions Committee](#) » [Annual Reports](#) » Annual Reports 2001-2002

## Graduate Admissions Committee

### Annual Reports 2001-2002

DATE: August 23, 2002  
 TO: Executive Committee, Faculty Senate  
 FROM: Maggie Niess, Chair (2001-02), Graduate Admissions Committee  
 SUBJECT: 2001-2002 Annual Report for the Graduate Admissions Committee

The Graduate Admissions Committee reviews files of Graduate School applicants who do not meet the minimum admission requirements. In the case of domestic applicants, the requirement is a grade point average (GPA) of 3.0 in the last 90 quarter hours or 60 semester hours of the first undergraduate degree. For international students a similar GPA requirement applies plus either a TOEFL score of 550 (213 on the computer version of the test) or a degree completed at an accredited institution that offers all course work in English. The committee considers other predictors of success in graduate programs including standardized test scores, letters of recommendation, and academic performance or work experience since the applicant earned a bachelor's degree. In evaluating such materials the Committee looks for substantive and compelling evidence indicating that the applicant will succeed at the graduate level to justify waiving the admission requirements. The Graduate Admissions Committee operates under the Standing Rules of the Faculty Senate and under the policies and procedures formulated by the Graduate Council.

During the period 1 July 2001 through 29 June 2002, the Committee met 22 times on essentially an every-other-week basis (see attached copy of the Committee's [annual audit](#) prepared by the Office of Admissions and Orientation). The GAC considered 165 cases. Of these 111 were domestic and 54 international. Eighty (48%) were admitted with no conditions, 24 (15%) were admitted with conditions, 34 (21%) were admitted provisionally, 6 (4%) were rejected, and 21 (13%) were deferred. The primary reason for the increased number of deferrals was a request to have the department establish acceptable provisions for consideration for admission.

During this year, the committee continued to use the categories for action: A (accept), P (accept with department provision), C (accept with condition, standard unless otherwise specified), D (defer for more information), R (reject). The standard condition that is used is that students must earn a 3.0 (B) or better in each course of the first 18 hours of graded graduate credits. If students are rejected, they may still complete 24 hours of upper division or graduate work, earning a 3.0 or better to be accepted if the department approves the acceptance. Students who use this avenue are not reconsidered by the GAC unless they wish to petition based on less than 24 hours of completed work.

In addition to this routine activity, Maggie Niess served as a non-voting member of the Graduate Council to provide the GAC perspective on issues considered. The primary concern during this past year has been with the Department Provision versus the Conditional Admit. The Department Provision is monitored by the Department while the Conditional Admit is monitored by the Graduate School. The GAC recommends that the current requirements of the Conditional Admit be changed such that students are able to (1) have a Graduate Teaching/Research Assistantships and (2) are able to file a Graduate Program before the conditional is met. With these changes, the GAC may prefer the Conditional admit rather than the Department Provisional.

cc: Michele Sandlin, Admission  
 Dr. Sally Francis, Interim Dean, Graduate School

| [Home](#) | [Agendas](#) | [Bylaws](#) | [Committees](#) | [Elections](#) | [Faculty Forum Papers](#) | [Handbook](#) | [Meetings](#) | [Membership/Attendance](#) | [Minutes](#) |



# Faculty Senate

[Faculty Senate](#) » [Committees/Councils](#) » [Graduate Admissions Committee](#) » [Annual Reports](#) » Annual Reports 2000-2001

## Graduate Admissions Committee

### Annual Reports 2000-2001

DATE: September 6, 2001  
 TO: Executive Committee, Faculty Senate  
 FROM: Maggie Niess, Chair (2000-01), Graduate Admissions Committee  
 SUBJECT: 2000-2001 Annual Report for the Graduate Admissions Committee

The Graduate Admissions Committee reviews files of Graduate School applicants who do not meet the minimum admission requirements. In the case of domestic applicants, the requirement is a grade point average (GPA) of 3.0 in the last 90 quarter hours or 60 semester hours of the first undergraduate degree. For international students a similar GPA requirement applies plus either a TOEFL score of 550 (213 on the computer version of the test) or a degree completed at an accredited institution that offers all course work in English. The committee considers other predictors of success in graduate programs including standardized test scores, letters of recommendation, and academic performance or work experience since the applicant earned a bachelor's degree. In evaluating such materials the Committee looks for substantive and compelling evidence indicating that the applicant will succeed at the graduate level to justify waiving the admission requirements. The Graduate Admissions Committee operates under the Standing Rules of the Faculty Senate and under the policies and procedures formulated by the Graduate Council.

During the period 30 June 2000 through 28 June 2001, the Committee met 27 times on essentially an every-other-week basis (see attached copy of the Committee's [annual audit](#) prepared by the Office of Admissions and Orientation). The GAC considered 171 cases. Of these 131 were domestic and 40 international. Ninety one (53%) were admitted with no conditions, 18 (10%) were admitted with department provisions, 37 (22%) were admitted with conditions, 5 (3%) were rejected, and 20 (12%) were deferred. The primary reason for the increased number of deferrals was a request to have the department establish acceptable provisions for consideration for admission.

During this year, the committee changed the categories for action: A (accept), P (accept with department provision), C (accept with condition, standard unless otherwise specified), D (defer for more information), R (reject). The department provision (P) action was added to clarify the expectation that the department monitor the progress of a student given specific provisions (identified by the department AND approved by the GAC) with the acceptance of the student. If students are rejected, they may still complete 24 hours of upper division or graduate work, earning a 3.0 or better to be accepted if the department approves the acceptance. Students who use this avenue are not reconsidered by the GAC unless they wish to petition based on less than 24 hours of completed work.

In addition to this routine activity, Maggie Niess served as a non-voting member of the Graduate Council. During the year, she submitted issues of concern to the Graduate Council for their consideration and action.

1. Graduate applicants with narrative transcripts (e.g., transcripts from Evergreen) automatically are categorized with an Advanced Notice of Rejection requiring department support and that members of the Graduate Admissions Committee must assess the quality of the transcript. The Committee requested a change in this procedure to require that the applicant department attest, in writing, to the quality of the transcript. The Graduate Council approved this request.
2. The standard condition has been that the student must obtain a cumulative grade of 3.25 in the first 18 credits of graded coursework. The GAC recommended that this condition be changed to a 3.0 (B) or better in each course of the first 18 hours of graded graduate credits. The Graduate Council approved this request.

cc: Michele Sandlin, Admission

Dr. Sally Francis, Interim Dean, Graduate School

| [Home](#) | [Agendas](#) | [Bylaws](#) | [Committees](#) | [Elections](#) | [Faculty Forum Papers](#) | [Handbook](#) | [Meetings](#) | [Membership/Attendance](#) | [Minutes](#) |

Faculty Senate, Oregon State University, Corvallis, OR 97331-6203 · 541.737.4344  
[Contact us with your comments, questions and feedback](#)  
[Copyright](#) © 2008 Oregon State University | [Disclaimer](#)  
Valid [xhtml](#).

# Faculty Senate

[Faculty Senate](#) » [Committees/Councils](#) » [Graduate Admissions Committee](#) » [Annual Reports](#) » Annual Reports 1999-2000

## Graduate Admissions Committee

### Annual Reports 1999-2000

DATE: October 13, 2000  
TO: Executive Committee, Faculty Senate  
FROM: Douglas F. Barofsky, Chair (1999-00), Graduate Admissions Committee  
SUBJECT: 1999-2000 Annual Report for the Graduate Admissions Committee

The Graduate Admissions Committee reviews files of Graduate School applicants who do not meet the minimum admission requirements. In the case of domestic applicants, the requirement is a grade point average (GPA) of 3.0 in the last 90 quarter hours or 60 semester hours of the first undergraduate degree. For international students a similar GPA requirement applies plus either a TOEFL score of 550 or a degree completed at an accredited institution that offers all course work in English. The committee considers other predictors of success in graduate programs including standardized test scores, letters of recommendation, and academic performance or work experience since the applicant earned a bachelor's degree. In evaluating such materials the Committee looks for substantive and compelling evidence indicating that the applicant will succeed at the graduate level to justify waiving the admission requirements. The Graduate Admissions Committee operates under the Standing Rules of the Faculty Senate and under the policies and procedures formulated by the Graduate Council.

During the period 30 June 1999 through 28 June 2000, the Committee met 24 times on essentially an every-other-week basis (see attached copy of the [Committee's annual audit](#) prepared by the Office of Admissions and Orientation). In addition to this routine activity, Doug Barofsky participated in a workshop, cosponsored by the Graduate School and the Office of Admissions and Orientation (see attached Workshop announcement and program overheads). This workshop was held for departmental heads, chairs of departmental admission committees, and departmental officers for graduate admissions to explain the process by which the GAC works. It was attended by approximately 30 people.

cc: Michele Sandlin, Admission & Orientation  
Dr. Sally Francis, Interim Dean, Graduate School  
Dr. Maggie Niess, Chair (2000-01), Graduate Admissions Committee

| [Home](#) | [Agendas](#) | [Bylaws](#) | [Committees](#) | [Elections](#) | [Faculty Forum Papers](#) | [Handbook](#) | [Meetings](#) | [Membership/Attendance](#) | [Minutes](#) |

# Faculty Senate

[Faculty Senate](#) » [Committees/Councils](#) » [Graduate Admissions Committee](#) » [Annual Reports](#) » Annual Reports 1998-1999

## Graduate Admissions Committee

### Annual Reports 1998-1999

The GAC considered 186 cases. Of these 129 were domestic and 57 international. 106 were admitted with no conditions (57%), 54 were admitted with conditions (29%), 20 were rejected (11%) and 6 were deferred (3%).

During the year, many discussions were held concerning the 24 hour rule and difficulties arising from students who have poor academic backgrounds and whose letters address their workplace as opposed to academic qualities. Other topics that arose were those of students with Masters degrees from other institutions who were applying to a doctoral program here, as well as the issue of narrative transcripts. These discussions culminated in a proposal to the Graduate Council which received a hearing and was deferred for action until 1999-2000.

#### 1998-1999 Committee Members:

Robby Robson '99, Chair  
Doug Barofsky '99  
Paul Borsa '99  
Barbara Crawford '00  
Richmond Barbour '00  
Karen Hooker '00  
Jodi Engel '01  
Ann Messersmith '01  
Ex-Officio: Robin Brown, Admissions

Submitted by: Robby Robson, Chair

| [Home](#) | [Agendas](#) | [Bylaws](#) | [Committees](#) | [Elections](#) | [Faculty Forum Papers](#) | [Handbook](#) | [Meetings](#) | [Membership/Attendance](#) | [Minutes](#) |

Faculty Senate, Oregon State University, Corvallis, OR 97331-6203 · 541.737.4344

[Contact us with your comments, questions and feedback](#)

[Copyright](#) © 2008 Oregon State University | [Disclaimer](#)

Valid [xhtml](#).

## **Process to Streamline the Appealed Applications for Admission to the Graduate School**

### **Graduate Admissions Committee**

- 1) If a department petitions for conditional admission for an applicant with a GPA of 2.75 or above, the admissions office will automatically grant the conditional admission as requested. If regular or provisional admission is requested, the file will go to the GAC.
- 2) If a department petitions for any form of admission for an applicant with a GPA below 2.75, the file will be reviewed by the GAC and a final admission will be decision made.

*Approved by Faculty Senate Executive Committee 3/14/06*

# Faculty Senate

[Faculty Senate](#) » [Committees/Councils](#) » [Graduate Admissions Committee](#) » Membership

## Graduate Admissions Committee

### Membership

- [2013-2014](#)
- [2012-2013](#)
- [2011-2012](#)
- [2010-2011](#)
- [2009-2010](#)
- [2008-2009](#)
- [2007-2008](#)
- [2006-2007](#)
- [2005-2006](#)
- [2004-2005](#)
- [2003-2004](#)
- [2002-2003](#)
- [2001-2002](#)
- [2000-2001](#)
- [1999-2000](#)

| [Home](#) | [Agendas](#) | [Bylaws](#) | [Committees](#) | [Elections](#) | [Faculty Forum Papers](#) | [Handbook](#) | [Meetings](#) | [Membership/Attendance](#) | [Minutes](#) |

Faculty Senate, Oregon State University, Corvallis, OR 97331-6203 · 541.737.4344

[Contact us with your comments, questions and feedback](#)

[Copyright](#) © 2008 Oregon State University | [Disclaimer](#)

Valid [xhtml](#).

# Faculty Senate

[Faculty Senate](#) » [Committees/Councils](#) » [Graduate Admissions Committee](#) » Annual Reports

## Graduate Admissions Committee

### Annual Reports

- [2012-2013](#)
- [2011-2012](#)
- [2010-2011](#)
- [2009-2010](#)
- [2008-2009](#)
- [2007-2008](#)
- [2006-2007](#)
- [2005-2006](#)
- [2004-2005](#)
- [2003-2004](#)
- [2002-2003](#)
- [2001-2002](#)
- [2000-2001](#)
- [1999-2000](#)
- [1998-1999](#)

| [Home](#) | [Agendas](#) | [Bylaws](#) | [Committees](#) | [Elections](#) | [Faculty Forum Papers](#) | [Handbook](#) | [Meetings](#) | [Membership/Attendance](#) | [Minutes](#) |

Faculty Senate, Oregon State University, Corvallis, OR 97331-6203 · 541.737.4344

[Contact us with your comments, questions and feedback](#)

[Copyright](#) © 2008 Oregon State University | [Disclaimer](#)

Valid [xhtml](#).

## GRADUATE ADMISSIONS COMMITTEE

Annual Activity Audit: July 1, 2012 through June 30, 2013

Files Reviewed	8	1	1	2	2	2	4	1	2	4	6	3	3	39
	8/15/12	9/5/12	9/19/12	10/3/12	11/7/12	12/19/12	3/6/13	3/20/13	4/17/13	5/1/13	5/15/13	6/5/13	6/19/13	TOTAL
<b>Certificates</b>														
Admit														0
Conditional Admit	2					1								3
Provisional Admit														0
Defer														0
Deny					1									1
<b>Master's</b>														
Admit							1			3	1	1		6
Conditional Admit	5	1	1	2	1	1	3		1	1	4		3	23
Provisional Admit										1	1		1	3
Defer														0
Deny								1			1	2		4
<b>Doctoral</b>														
Admit									1					1
Conditional Admit	1													1
Provisional Admit	1													1
Defer														0
Deny														0
<b>Total</b>	9	1	1	2	2	2	4	1	2	5	7	3	4	43

Meetings Held	13			<u>Cert</u>	<u>Master</u>	<u>PhD</u>
<b>Files/Decisions*</b>	39	43	<b>International</b>	0	14	1
<b>Full Admit</b>	7	16.3%	<b>Full Admit</b>	0	4	1
<b>Conditional</b>	27	62.8%	<b>Conditional</b>	0	8	0
<b>Provisional</b>	4	9.3%	<b>Provisional</b>	0	1	0
<b>Defer</b>	0	0.0%	<b>Defer</b>	0	0	0
<b>Deny</b>	5	11.6%	<b>Deny</b>	0	2	0

\* Includes international applicants

Note: Applicants can be admitted with both conditions and provisions

## GRADUATE ADMISSIONS COMMITTEE

Annual Activity Audit: July 1, 2011 through June 30, 2012

Files Reviewed	4	3	2	1	4	1	1	1	1	3	4	4	2	3	2	5	3	44
	8/17/11	9/7/12	9/21/11	10/5/11	10/19/11	12/21/11	1/4/12	1/18/12	2/15/12	3/7/12	3/21/12	4/4/12	4/18/12	5/2/12	5/16/12	6/6/12	6/20/12	TOTAL
<b>Certificates</b>																		
Admit																		0
Conditional Admit	1																	1
Provisional Admit																		0
Defer																		0
Deny																		0
<b>Master's</b>																		
Admit					1					1				1	1		1	5
Conditional Admit	3			1	3	1	1		1	1	4	3	1	1	1	2	1	24
Provisional Admit	1								1	1								3
Defer																		0
Deny		3	2					1		1						1	1	9
<b>Doctoral</b>																		
Admit														1		1		2
Conditional Admit												1	1			1		3
Provisional Admit																		0
Defer																		0
Deny																		0
<b>Combined</b>																		
Admit					1					1				2	1	1	1	7
Conditional Admit	4			1	3	1	1		1	1	4	4	2	1	1	3	1	28
Provisional Admit	1								1	1								3
Defer																		0
Deny		3	2					1		1						1	1	9
	5	3	2	1	4	1	1	1	2	4	4	4	2	3	2	5	3	47

<b>Total Meetings</b>	17	%		<u>Cert</u>	<u>Master</u>	<u>PhD</u>
<b>Total Files*</b>	44		<b>Intl. Files:</b>	1	7	4
<b>Full Admit</b>	7	15.9%	<b>Full Admit</b>		3	2
<b>Conditional</b>	28	63.6%	<b>Conditional</b>	1	4	2
<b>Provisional</b>	3	6.8%	<b>Provisional</b>			

\* Includes international applicants

Note: Applicants can be granted simultaneous conditional and provisional status

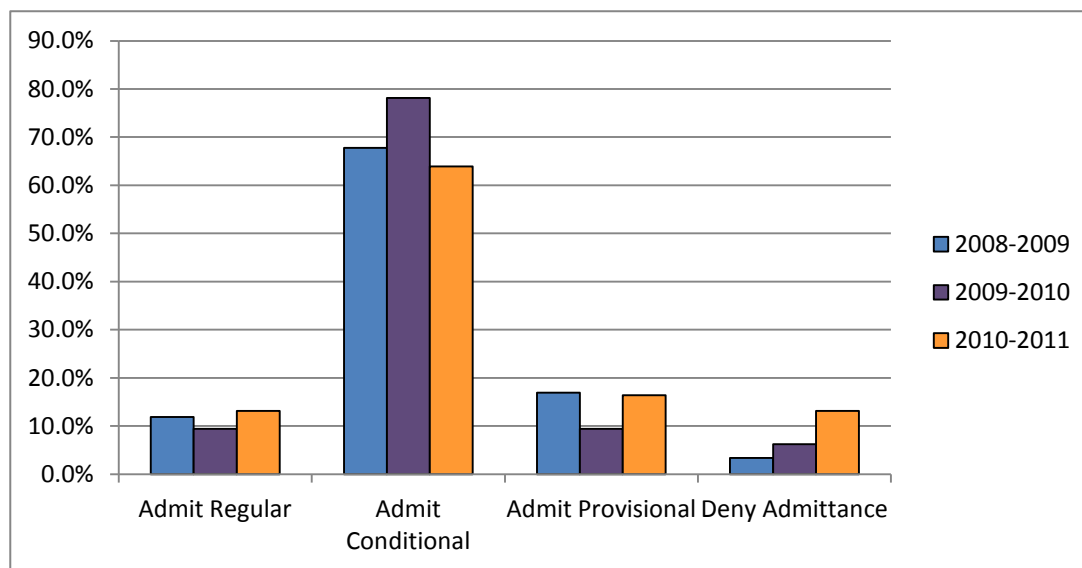
<b>Defer</b>	0	0.0%	<b>Defer</b>
<b>Deny</b>	9	20.5%	<b>Deny</b>



## Outcomes of GAC Meetings Over the Past Three Years

GAC Decision	2008-2009		2009-2010		2010-2011	
	Number	Percent	Number	Percent	Number	Percent
Admit Regular	7	11.9%	6	9.4%	8	13.1%
Admit Conditional	40	67.8%	50	78.1%	39	63.9%
Admit Provisional	10	16.9%	6	9.4%	10	16.4%
Deny Admittance	2	3.4%	4	6.3%	8	13.1%
Defer Case	0	0.0%	2	3.1%	2	3.3%
Total Files Reviewed*	59		64		61	

\*Some applicants were granted simultaneous conditional and provisional admittance.



# Non-recognized degree form for international applicants/Appeal to Graduate Admissions Committee

Student:	OSU ID:
----------	---------

**Instructions:** This applicant has a post-secondary degree which is not recognized as equivalent to a Bachelor's degree and is not accepted by OSU for admission to Graduate School. The Graduate Admissions Council will consider exceptions to the Bachelor's or equivalent degree policy in situations where all other requirements for admission are met, including the attainment of acceptable TOEFL scores and a cumulative grade point average of 3.0 or higher on the last 90 quarter credits (or equivalent) of graded coursework from a recognized international institution of higher education. A list of international institutions recognized by OSU is available on the Graduate School website. Please provide the information requested below and attach any relevant additional documents. After you complete the information and sign this form, also complete and attach the Departmental Action Form.

Please list all of the post-secondary degrees obtained by the applicant and the awarding institution (e.g. BPharm, Amman University in Jordan; MD, University of Goteborg, Sweden).

1.
2.

On a separate page(s), please explain how, in your estimation, the applicant has demonstrated that they are prepared for graduate education. Please include evidence of ability to communicate proficiently in writing, evidence of preparation to conduct research, and evidence of critical thinking skills. This evidence may include, but should not be limited to: analytical writing GRE scores, TOEFL scores, statement of purpose, phone or video interview with the applicant, assessment of referees, publications, participation in professional activity requiring a high level of critical thinking, completion of coursework outside of the professional area, participation in research as a professional student, or relevant extracurricular activities. Please include a written assessment of the applicant's coursework as it relates to preparation for your graduate program. If there is a critical area in which the applicant appears to be less than prepared (for example, very little breadth of subject area in the professional degree), please provide details on a plan for remediation if accepted at OSU. This may include coursework in another area to provide breadth, undergraduate statistics to prepare for graduate research, or an undergraduate writing class for remediation.

Successful appeals will generally include one to two full pages of explanation for the Graduate Admissions Council to consider.

Please send the applicant's admissions file to the Graduate Admission Committee, and include the following information:

1. Departmental letter(s) of support written by the person(s) designated by the department. At least one letter is mandatory and should go beyond a statement of departmental willingness to accept the candidate. It should state clearly why specific shortcomings evident in the candidate's file should not preclude her/his success in your graduate program.
2. Test Scores if applicable and available.
3. Copies of letter(s) of Recommendation (on file in department).
4. Statement of Objective from student.
5. Other supporting documentation (please specify):

Graduate program director, department chair or unit head responsible for this appeal:

Name (please print) \_\_\_\_\_

Signature \_\_\_\_\_ Date \_\_\_\_\_

**Return complete packet to the Graduate School  
For questions contact Rosemary Garagnani 737-1465**

# GRADUATE ADMISSIONS COMMITTEE

Annual Audit

July 1, 2005 through June 30, 2006

Files reviewed      8      1      7      3      5      1      6      4      1      2      1      3      2      2      3      1      1      14      12      9      4      2      1      5      98

	7/6/05	7/20/05	8/3/05	8/17/05	8/31/05	9/6/05	9/14/05	9/28/05	10/12/05	10/26/05	12/7/05	12/21/05	1/4/06	1/18/06	2/15/06	3/1/06	3/15/06	4/5/06	4/19/06	5/3/06	5/17/06	5/31/06	6/14/06	6/28/06	TOTAL
Master's Degree Level																									
Admit	1		1	1	1		3	1		1		1	1	1	1	1	7	4	2	1				28	
Conditional Admit	5	1	2	1	2	1	3	0	1	1	1	3	1	1	1		5	7	5	3	2	1	5	52	
Provisional Admit	4		2	1	1		1	1	1								1							12	
Defer	1		1					1																3	
Deny	1		1		1																			3	
																								0	
PhD Level																									
Admit				1											1		2	1	1					6	
Conditional Admit								1												1				2	
Provisional Admit																								0	
Defer																								0	
Deny																								0	
Combined																									
Admit	1		1	2	1		3	1		1			1	1	2	1	1	9	5	3	1			34	
Conditional Admit	5	1	2	1	2	1	3	1	1	1	1	3	1	1	1		5	7	6	3	2	1	5	54	
Provisional Admit	4		2	1	1		1	1	1								1							12	
Defer	1		1					1																3	
Deny	1		1		1																			3	
TOTAL	12	1	7	4	5	1	7	4	2	2	1	3	2	2	3	1	1	15	12	9	4	2	1	5	106

<b>Total Meetings :</b>	24
<b>Total Files Reviewed* :</b>	98 (27)
<b>Total Admit :</b>	34 (14)
<b>Total Conditional Admit :</b>	54 (12)
<b>Total Provisional Admit:</b>	12 (1)
<b>Total Defer:</b>	3 (0)
<b>Total Deny :</b>	3 (0)

\* All Totals include international students

() International Students

Note: some applicants were granted simultaneous conditional and provisional status

## **Proposal submitted the Faculty Senate Executive Committee**

### **Policy to Streamline the Appealed Applications for Admission to the Graduate School Proposed by the Graduate Admissions Committee**

The graduate Admissions Committee of the Faculty Senate acts on appealed applications for admission to the Graduate School. The committee reviews files of applicants who do not meet the minimum admission requirements (GPA > 3.0). In evaluating these files, the committee considers various predictors of success in graduate program. However, based on the last three years of data from annual reports, only 3% to 4% of these students are rejected and the rest are accepted either regular admit, conditional admit or provisional admit. In order to streamline the process, the committee is proposing that all appealed applications whose GPAs are below 3.0 but above 2.75 be accepted as conditional admit without reviewing their files since these students are accepted in all cases after reviewing their files.

The current process and the proposed process are outlined below:

#### **Current Process**

- 1) Graduate applications showing a GPA of less than 3.0 are currently routed by admissions to the graduate departments with an "Advance Notice of Rejection" slip;
- 2) Department chooses whether to allow the rejection or petition the GAC for admission at one of 3 levels: regular, conditional or provisional;
- 3) If an applicant does not receive departmental support, a rejection/denial letter is sent;
- 4) If a department petitions on behalf of an applicant, the file is reviewed by the GAC and a final admission decision is made.

#### **Proposed Process**

- 1) Graduate applications showing a GPA of less than 3.0 would be routed by admissions to the graduate departments with an "Advance Notice of Rejection" slip;
- 2) Department chooses whether to allow the rejection or petition the GAC for admission at one of 3 levels: regular, conditional or provisional;
  - a) If a department petitions for conditional admission for an applicant with a GPA of 2.75 or above, the admissions office will automatically grant the conditional admission as requested. If regular or provisional admission is requested, the file will go to the GAC.
  - b) If a department petitions for any form of admission for an applicant with a GPA below 2.75, the file will be reviewed by the GAC and a final admission will be decision made.
- 3) If any applicant does not receive departmental support via petition, a rejection/denial letter is sent.

*Approved by Faculty Senate Executive Committee 3/14/06*

## GRADUATE ADMISSIONS COMMITTEE

Annual Audit

July 9, 2003 through June 23, 2004

	7/9/2003	7/24/2003	8/6/2003	8/20/2003	8/27/2003	9/17/2003	10/1/2003	11/26/2003	12/10/2003	1/21/2004	2/4/2004	2/18/2004	3/3/2004	3/17/2004	3/31/2004	4/14/2004	4/28/2004	5/12/2004	5/26/2004	6/9/2004	6/23/2004	TOTAL
<b>Master's Degree Level</b>																						
Admit	2	1	6			2	2			1						3	2	3	2	4	1	29
Conditional Admit	1		8	2	2	5	2	1			1	2	4		5	6	5	6		1	3	54
Provisional Admit																						0
Defer			2			2																4
Deny																				1		1
<b>PhD Level</b>																						
Admit															1			1	1	1		4
Conditional Admit			1						1		1			2			1	2			1	9
Provisional Admit																						0
Defer										1							1					2
Deny																						0
<b>Sub Total (M &amp; PhD)</b>																						
Admit	2	1	6			2	2			1					1	3	2	4	3	5	1	33
Conditional Admit	1		9	2	2	5	2	1	1		2	2	4	2	5	6	6	8		1	4	63
Provisional Admit																						0
Defer			2			2				1							1					6
Deny																					1	1
<b>TOTAL</b>	<b>3</b>	<b>1</b>	<b>17</b>	<b>2</b>	<b>2</b>	<b>9</b>	<b>4</b>	<b>1</b>	<b>1</b>	<b>2</b>	<b>2</b>	<b>2</b>	<b>4</b>	<b>2</b>	<b>6</b>	<b>9</b>	<b>9</b>	<b>12</b>	<b>3</b>	<b>6</b>	<b>6</b>	<b>103</b>

Total Meetings : 21

Total Files Reviewed\* : 103 (21)

Total Admit : 33 (5)

Total Conditional Admit : 63 (14)

Total Provisional Admit: 0 (0)

Total Defer: 6 (2)

Total Deny : 1 (0)

\* All Totals include international students

() International Students

GRADUATE ADMISSIONS COMMITTEE

Annual Audit

July 11, 2002 through June 25, 2003

	7/11/2002	8/14/2002	8/28/2002	9/11/2002	9/25/2002	10/23/2002	11/6/2002	11/20/2002	12/4/2002	12/18/2002	1/8/2003	1/22/2003	2/5/2003	2/19/2003	3/5/2003	3/19/2003	4/2/2003	4/16/2003	4/30/2003	5/14/2003	5/28/2003	6/11/2003	6/25/2003	TOTAL
Master's Degree Level																								
Admit	3	4	2	2	3	2	1					1	2	1	3	2	3	4	3	2	4	1	3	46
Conditional Admit	1	2		1	2				1		2				2	1	3	3	5	1	2	3	3	32
Provisional Admit		3		4	1	1				1			1	1		1								13
Defer	1		2	1												1								5
Deny		2	1																			1		4
PhD Level																								
Admit	1							1				1								3	1		2	9
Conditional Admit																	1							1
Provisional Admit																								0
Defer			1		1																			2
Deny																				1				1
Sub Total (M & PhD)																								
Admit	4	4	2	2	3	2	1	1				2	2	1	3	2	3	4	3	5	5	1	5	55
Conditional Admit	1	2		1	2				1		2		1		2	1	4	3	5	1	2	3	3	34
Provisional Admit		3		4	1	1				1				1		1								12
Defer	1		3	1	1											1								7
Deny		2	1																	1		1		5
TOTAL	6	11	6	8	7	3	1	1	1	1	2	2	3	2	5	5	7	7	8	7	7	5	8	113

Total Meetings : 23  
Total Files Reviewed\* : 113 (31)  
Total Admit : 55 (16)  
Total Conditional Admit : 34 (9)  
Total Provisional Admit: 12 (3)  
Total Defer: 7 (2)  
Total Deny : 5 (1)

\* All Totals include international students

( ) International Students

**Graduate Admissions Committee**

Annual Audit August 8, 2001 through June 26, 2002																							
	8/8/01	8/22/01	9/5/01	9/19/01	10/3/01	10/17/01	10/31/01	11//14/01	11/28/01	12/12/01	1/9/02	2/6/02	2/20/02	3/06/002	3/20/02	4/3/02	4/17/02	5/1/02	5/15/02	5/29/02	6/12/02	6/26/02	TOTAL
Master's Degree Level																							
Admit	6	1	0	2	1	1	0	1	4	2	1	2	1	1	8	5	10	4	3	3	0	2	58
Conditional Admit	3	2	1	0	1	0	0	0	1	2	1	0	0	1	3	2	1	3	0	0	0	1	22
Provisional Admit	2	1	0	2	2	2	0	0	0	1	0	0	1	0	3	6	4	1	0	1	2	2	30
Defer	1	1	1	2	0	2	0	0	0	0	0	0	2	1	1	0	1	0	3	1	0	0	16
Deny	1	0	0	0	0	0	0	0	0	0	0	0	0	0	0	0	0	1	1	0	0	1	4
PhD Level																							
Admit	1	1	0	0	0	0	1	0	0	0	0	1	0	0	4	1	3	5	1	3	0	1	22
Conditional Admit	0	0	0	0	0	0	0	0	0	0	0	0	0	1	0	0	1	0	0	0	0	0	2
Provisional Admit	0	0	0	0	0	0	1	0	0	0	0	0	0	0	0	2	0	1	0	0	0	0	4
Defer	1	0	1	0	0	0	0	0	0	0	0	0	0	0	1	0	1	1	0	0	0	0	5
Deny	1	0	0	0	0	0	0	0	0	0	0	0	0	0	0	0	0	1	0	0	0	0	2
Sub Total (M & PhD)																							
Admit	7	2	0	2	1	1	1	1	4	2	1	3	1	1	12	6	13	9	4	6	0	3	80
Conditional Admit	3	2	1	0	1	0	0	0	1	2	1	0	0	2	3	2	2	3	0	0	0	1	24
Provisional Admit	2	1	0	2	2	2	1	0	0	1	0	0	1	0	3	8	4	2	0	1	2	2	34
Defer	2	1	2	2	0	2	0	0	0	0	0	0	2	1	2	0	2	1	3	1	0	0	21
Deny	2	0	0	0	0	0	0	0	0	0	0	0	0	0	0	0	0	2	1	0	0	1	6
TOTAL	16	6	3	6	4	5	2	1	5	5	2	3	4	4	20	16	21	17	8	8	2	7	165
														<b>Total Meetings : 22</b> <b>Total Files Reviewed* : 165 (54)</b> <b>Total Admit : 80 (MS: 22 / PhD: 17)</b> <b>Total Conditional Admit : 24 (MS: 6 / PhD: 2)</b> <b>Total Provisional Admit: 34 (MS:4)</b> <b>Total Defer: 21 (MS:1 / PhD:2)</b> <b>Total Deny : 6</b> * All Totals include international students ( ) International Students									

Return to [2001-2002 Annual Report](#)



GRADUATE ADMISSIONS COMMITTEE														
Annual Audit														
July 12, 2000 through July 17, 2001														
	7/12/00	7/26/00	8/8/00	8/22/00	8/24/99	9/6/00	9/20/00	10/4/00	10/18/00	11/1/00	11/15/00	12/13/00	1/26/00	1/10/01
Master's Degree Level														
Admit	3	3	7	1	1	1	5	1	2				1	4
Conditional Admit	3	2		2			3	1			3	1		
Provisional Admit						1		1						
Defer		1												
Deny	1	1										1		1
PhD Level														
Admit	2		2							1				
Conditional Admit	1										1			1
Provisional Admit										1				1
Defer														
Deny														
Sub Total (M & PhD)														
Admit	5	3	9	1	1	1	5	1	2	1	0	0	1	4
Conditional Admit	4	2	0	2	0	0	3	1	0	0	4	1	0	1
Provisional Admit	0	0	0	0	0	1	0	1	0	1	0	0	0	1
Defer	0	1	0	0	0	0	0	0	0	0	0	0	0	0
Deny	1	1	0	0	0	0	0	0	0	0	0	1	0	1
TOTAL	10	7	9	3	1	2	8	3	2	2	4	2	1	7

GRADUATE ADMISSIONS COMMITTEE														
Annual Audit														
July 12, 2000 through July 17, 2001														
	1/24/01	2/17/01	2/21/01	3/7/01	3/21/01	4/6/01	4/18/01	5/2/01	5/16/01	5/30/01	6/13/01	6/27/01	7/17/01	TOTAL
Master's Degree Level														
Admit	1	2	2	5	12	4	4	2	1	2	3	4		71
Conditional Admit	2		1	1	2		2		4	2	1	3		33
Provisional														

Admit		2				1		1	1	2	1		10
Defer		1		1	1		1		2	3	4	3	17
Deny							1						5
PhD Level													
Admit		1	1	1	1	2	3	2	1		1	1	20
Conditional Admit				1									4
Provisional Admit		1						2	1	2			8
Defer		1					1	1					3
Deny													
Sub Total (M &PhD)													
Admit	1	3	3	6	13	6	7	4	2	2	4	5	91
Conditional Admit	2	0	1	2	2	0	2	0	4	2	1	3	37
Provisional Admit	0	3	0	0	0	0	1	2	2	3	2	1	18
Defer	0	2	0	1	1	0	2	1	2	3	4	3	20
Deny	0	0	0	0	0	0	1	0	0	0	0	0	5
TOTAL	3	8	4	9	16	6	13	7	10	10	11	12	171
									Total Meetings : 27				
									Total Files Reviewed : 171 (40)				
									Total Admit : 91 (MS: 23 / PhD: 13)				
									Total Conditional Admit : 37 (MS: 8 / PhD: 4)				
									Total Provisional Admit: 18 (MS:2 / PhD: 6)				
									Total Defer: (MS:2 / PhD:1)				
									Total Deny : 5 (MS:2)				
									( ) International Students				

GRADUATE ADMISSIONS COMMITTEE														
Annual Audit														
September 8, 1999 through June 28, 2000														
	6/30/99	7/14/99	7/28/99	8/11/99	8/24/99	9/8/99	9/22/99	10/6/99	11/3/99	12/1/99	12/29/99	01/12/00	1/26/00	2/9/00
<b>Master's Degree Level</b>														
Admit	2	6	2	4	3	1	2	1	1	2	4	1	1	1
Conditional Admit			1	8	3	5	3	3		2	1			1
Defer														
Deny	1			1	2	1		1				1		
<b>PhD Level</b>														
Admit	1			1	1	1			1					
Conditional Admit	1													
Defer														
Deny														
<b>Sub Total (M &amp; PhD)</b>														
Admit	3	6	2	5	4	2	2	1	2	2	4	1	1	1
Conditional Admit	1	0	1	8	3	5	3	3	0	2	1	0	0	1
Defer	0	0	0	0	0	0	0	0	0	0	0	0	0	0
Deny	1	0	0	1	2	1	0	1	0	0	0	1	0	0
<b>TOTAL</b>	<b>5</b>	<b>6</b>	<b>3</b>	<b>14</b>	<b>9</b>	<b>8</b>	<b>5</b>	<b>5</b>	<b>2</b>	<b>4</b>	<b>5</b>	<b>2</b>	<b>1</b>	<b>2</b>

UNDERGRADUATE ADMISSIONS COMMITTEE														
Annual Audit														
September 8, 1999 through June 28, 2000														
	2/23/00	3/8/00	3/22/00	4/5/00	4/19/00	5/3/00	5/17/00	5/31/00	6/14/00	6/28/00				TOTAL
<b>Master's Degree Level</b>														
Admit		2	8	5	4	6	4	7	2	7				76
Conditional Admit	1		2	1	3	1	4	2	9	2				52
Defer			1		1									2
Deny			4	2	1	1	2		1					18
<b>PhD Level</b>														
Admit	1	1			1	4	1	1	5	1				20
Conditional Admit						2								3

Defer														
Deny														
Sub Total (M &PhD)														
Admit	1	3	8	5	5	10	5	8	7	8	0	0	0	96
Conditional Admit	1	0	2	1	3	3	4	2	9	2	0	0	0	55
Defer	0	0	1	0	1	0	0	0	0	0	0	0	0	2
Deny	0	0	4	2	1	1	2	0	1	0	0	0	0	18
TOTAL	2	3	15	8	10	14	11	10	17	10	0	0	0	171
( ) International Students											Total Meetings : 24			
											Total Files Reviewed : 171 (61)			
											Total Admit : 96 (42)			
											Total Conditional Admit : 55 (16)			
											Total Defer: 2			
											Total Deny : 18 (3)			