

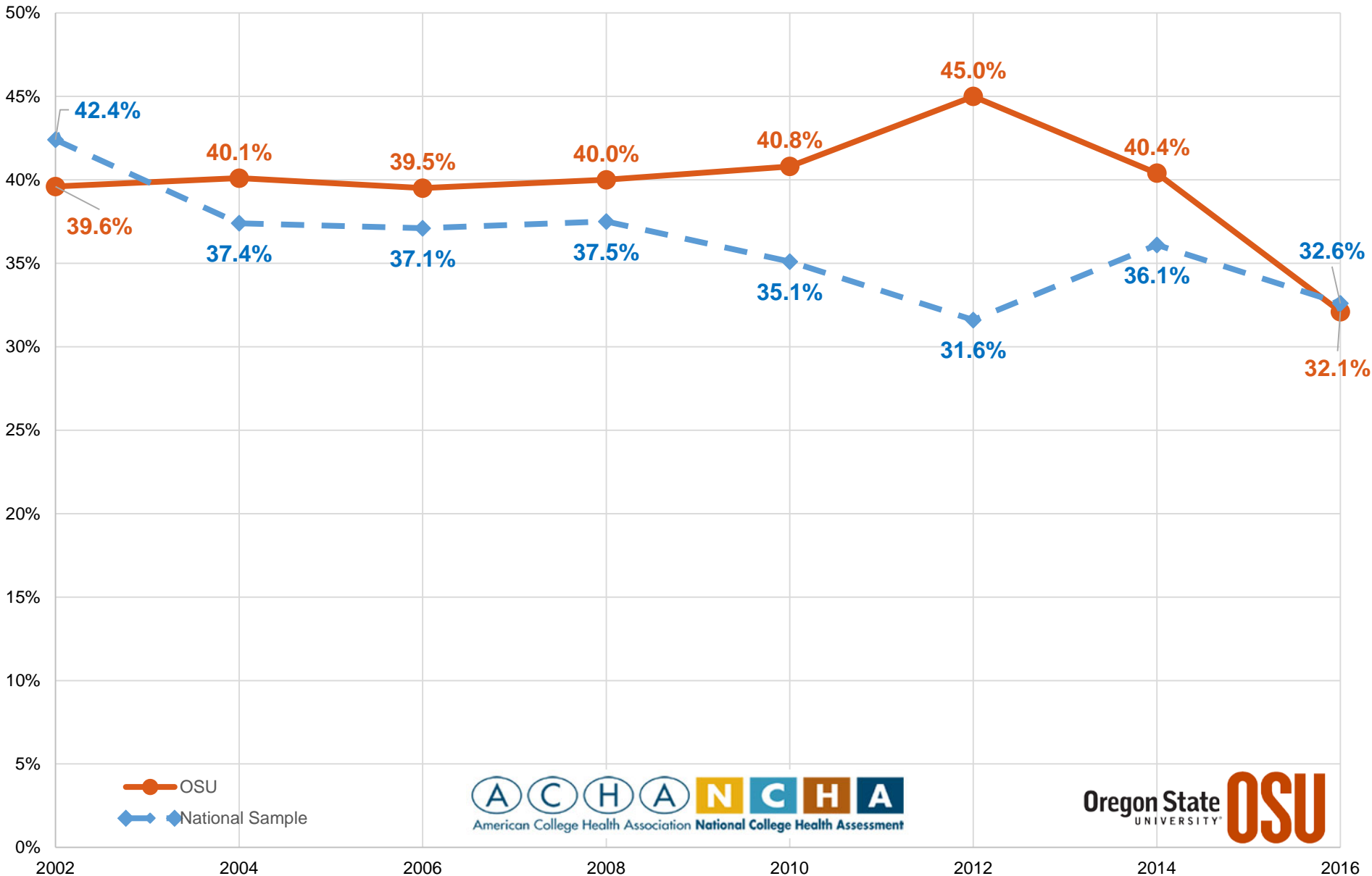
# Alcohol, other drugs data and prevention efforts

An overview of the data, our current practices and future goals

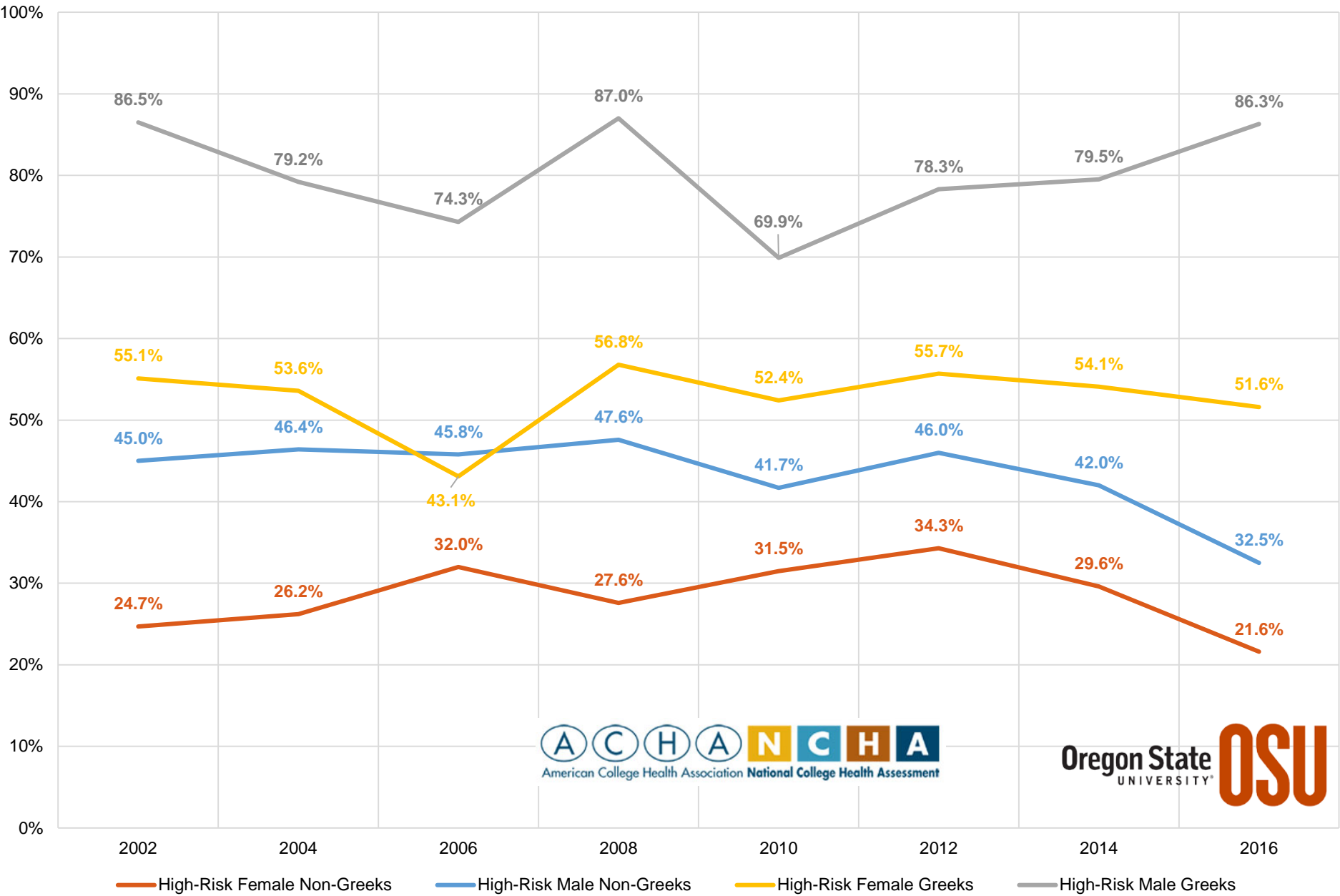
**Susie Brubaker-Cole, Ph.D.**

**Vice Provost for Student Affairs**

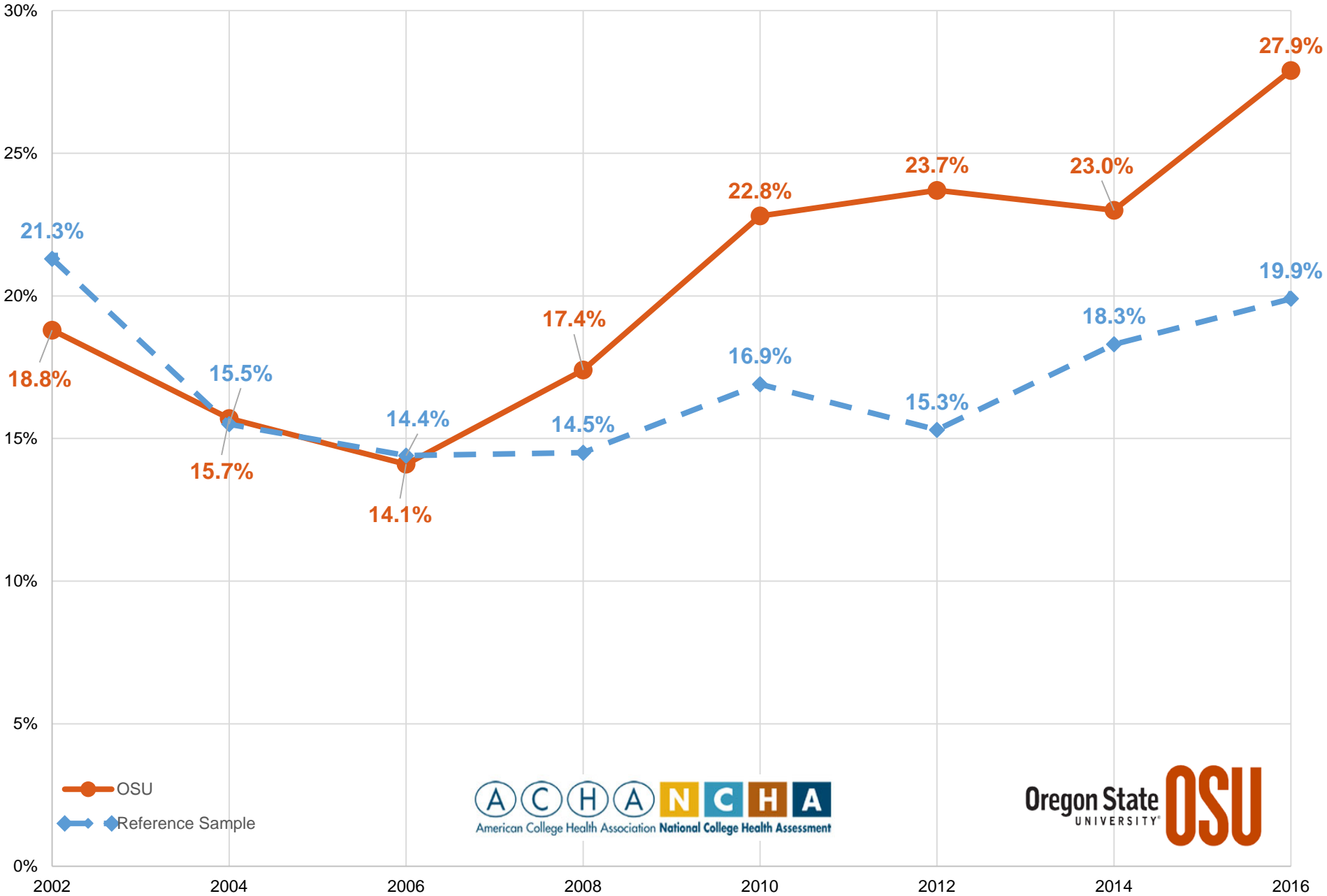
# Percent of undergraduate students who reported consuming five or more drinks in a single sitting within the last two weeks (high-risk alcohol use) compared to national average



# Percent of undergraduate students who reported consuming five or more drinks in a single sitting within the last two weeks (high-risk alcohol use) by Greek affiliation and reported sex



# Percentage of Students Reporting Marijuana Use in the Past 30 Days Compared to National Sample

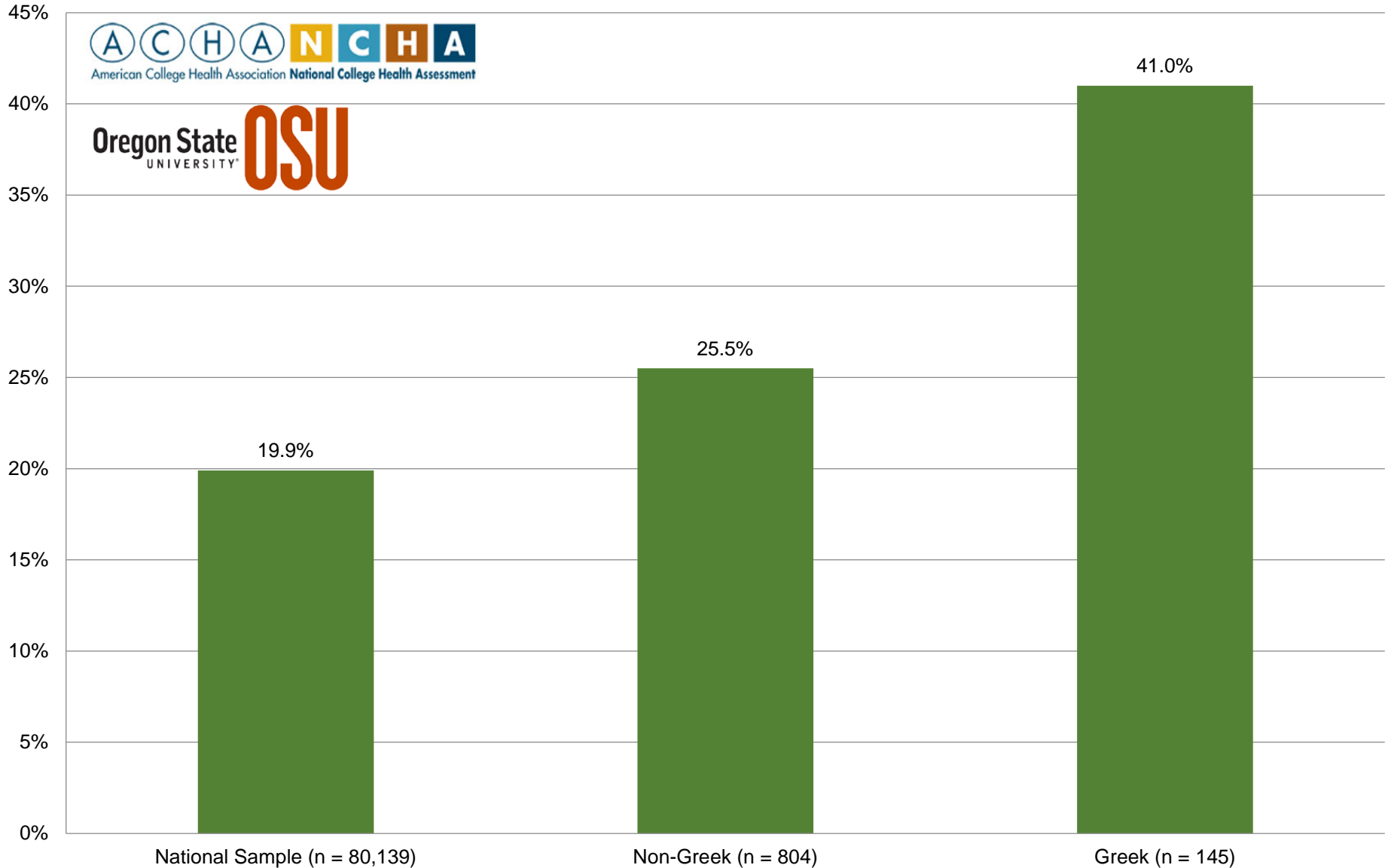


—●— OSU  
- - -◆- - Reference Sample



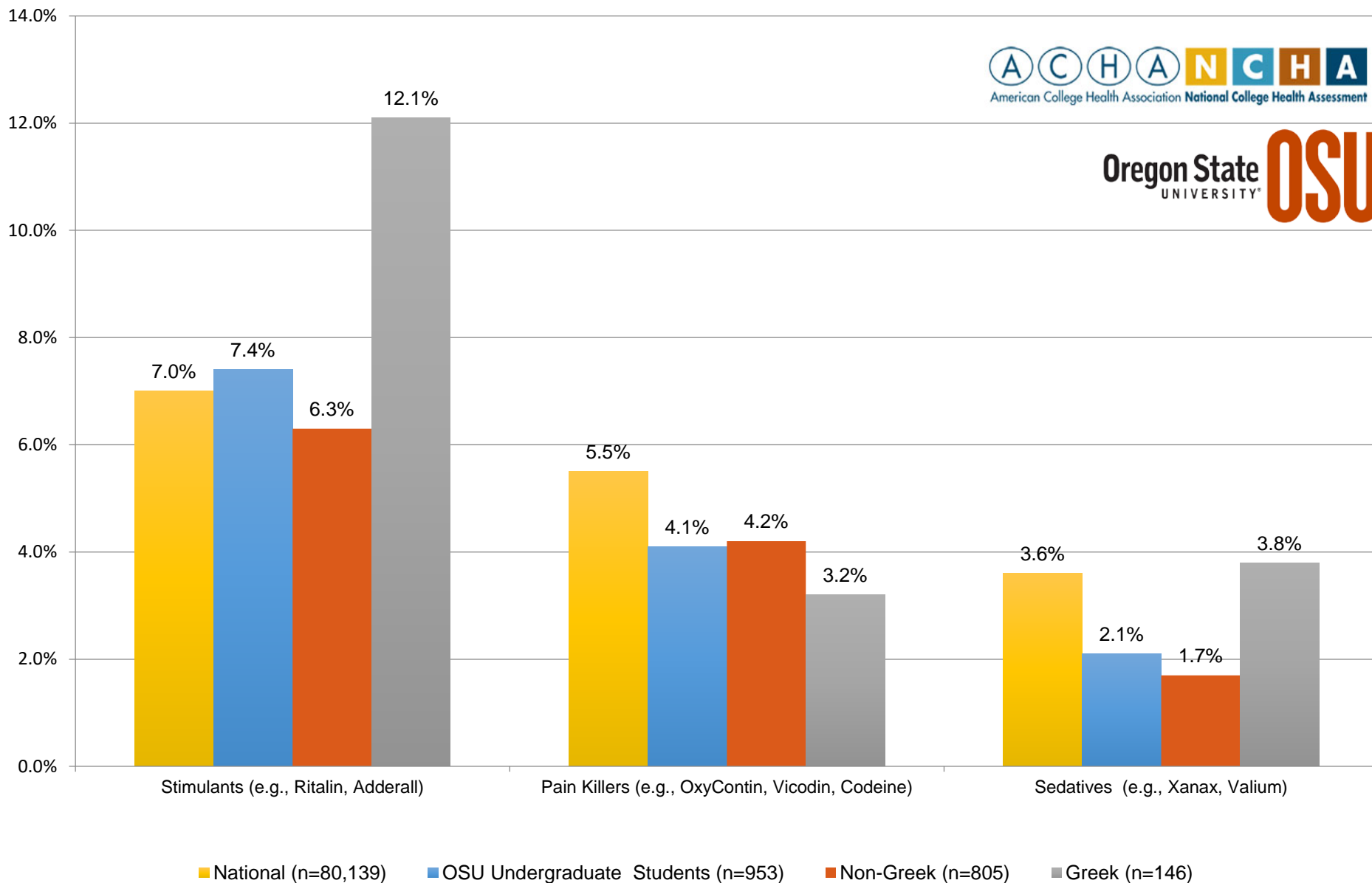
# Percentage of Students Reporting Marijuana Use in the Past 30 Days from 2016

## Greek, Non-Greek and National Sample



# Use of unprescribed prescription drugs in the last 12 months: All Students, Non-Greek, & Greek Students

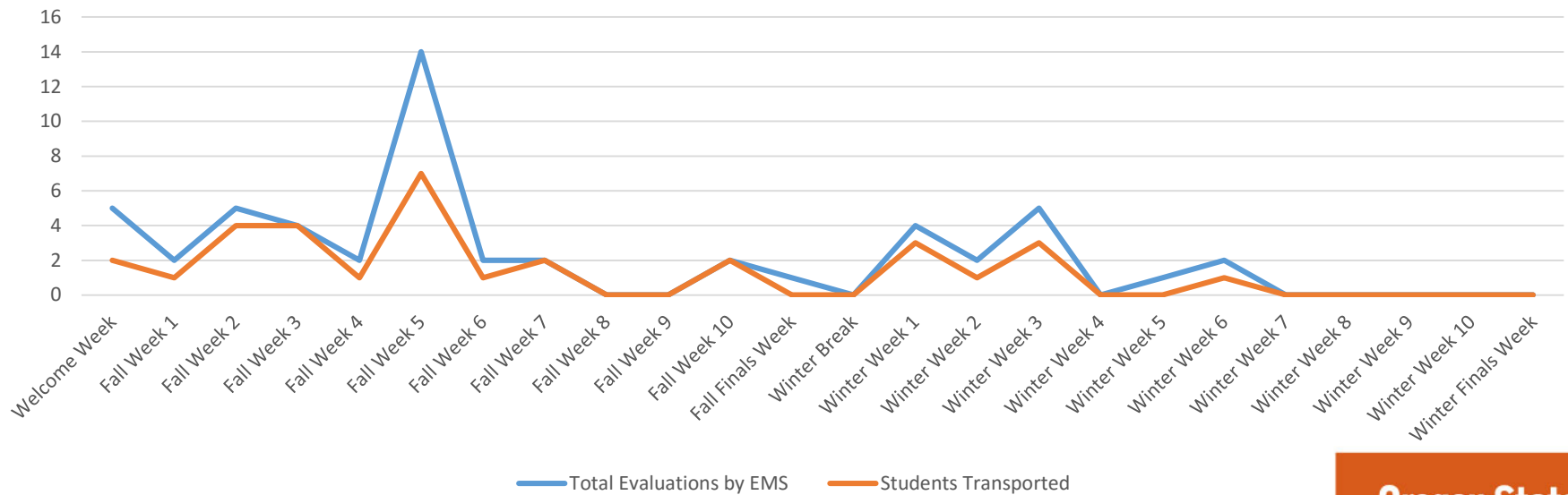
Spring 2016 NCHA



# Transports & Evaluation: University Housing

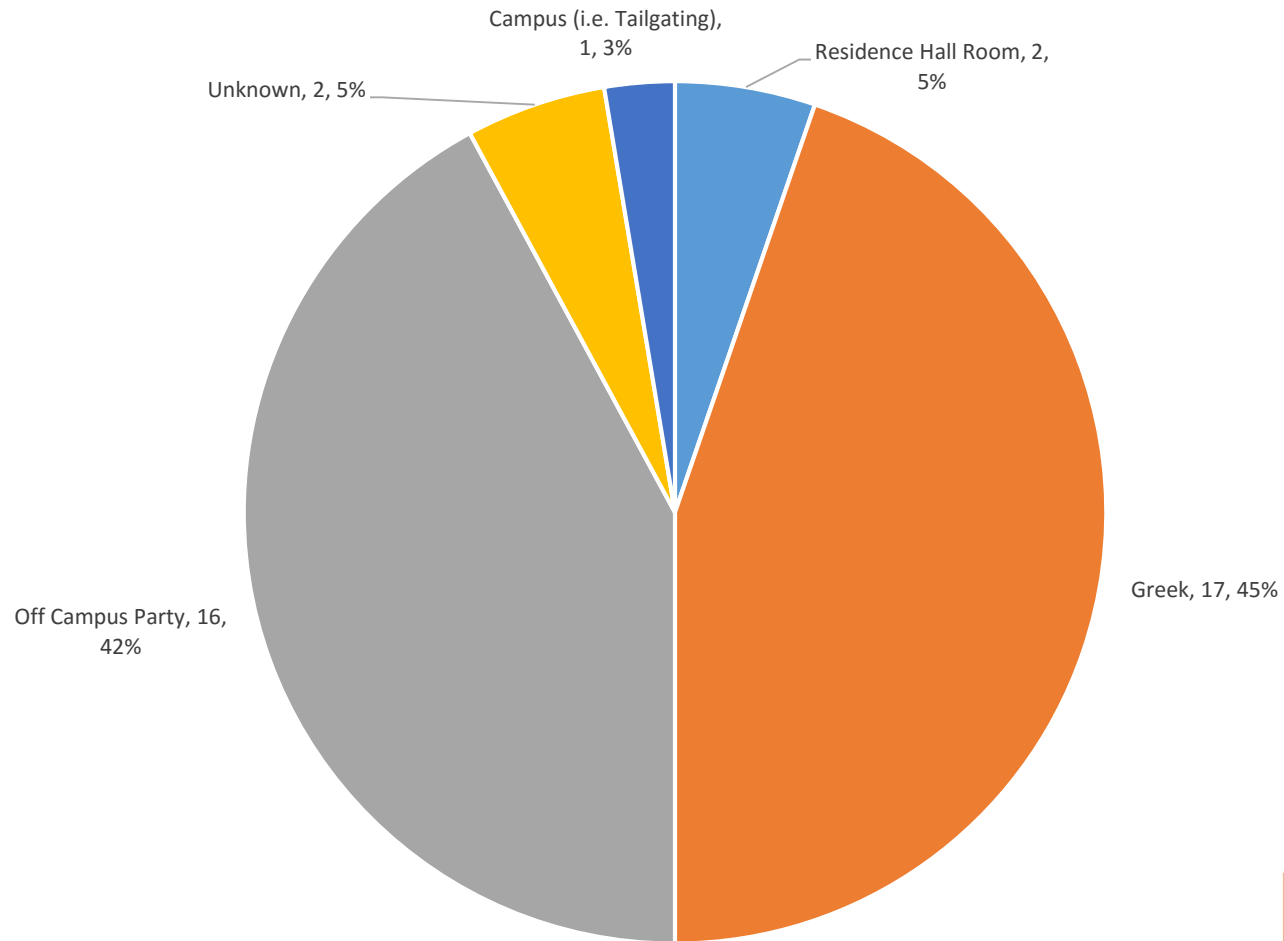
As of March 1, 2017, a total of 53 evaluations for alcohol/drug misuse. Out of these 53, 31 (58.5%) students were transported to the hospital during their evaluation from EMS.

Evaluations and Transports (by Week)



# Where were they drinking?

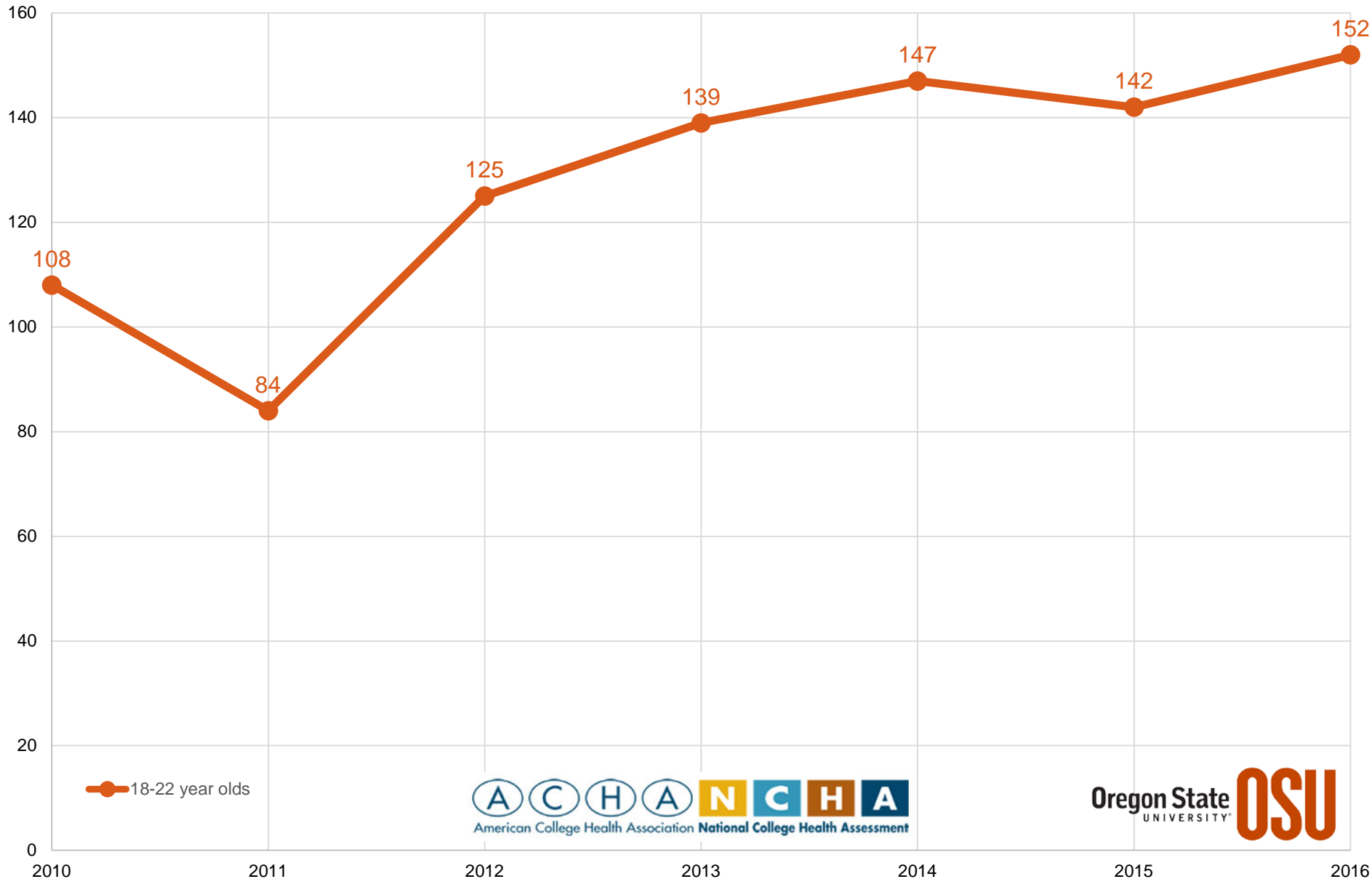
Students transported and evaluated for alcohol use from university housing





# 18-22 year olds seen in Good Samaritan Emergency Department for alcohol by year

*Note: Enrollment at OSU could not be verified due to privacy laws*



OSU students engaging in high-risk drinking  
are

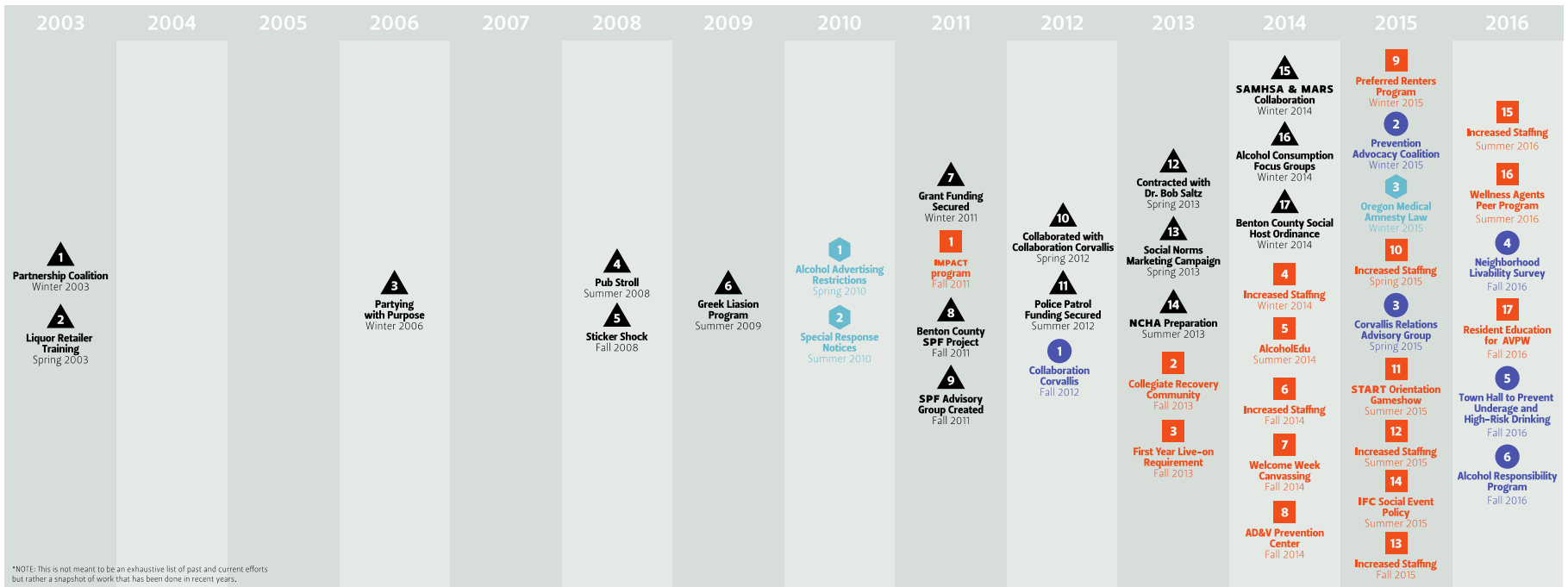
6.8x

more likely to receive a lower grade on an  
exam or project than those who do not.

OSU students engaging in high-risk drinking  
are

7.7x

more likely to receive a lower grader in a  
course than those who do not.



## OSU Efforts

- 1 IMPACT Program** Fall 2011  
An evidence-based alcohol and drug diversion program for students sanctioned for an alcohol or drug violation
- 2 Collegiate Recovery Community** Fall 2013  
The Collegiate Recovery Community offers recovery housing on campus, a clubhouse for a sober environment for students to hang out and study, and additional resources to support students in their alcohol and substance-free lifestyle
- 3 First Year Live-on Requirement** Fall 2013  
Oregon State University implemented a requirement that all first-year students live in on-campus housing during their freshman year
- 4 Increased Staffing** Winter 2014  
Community Conduct Officer hired for the office of Student Conduct and Community Standards
- 5 AlcoholEdu** Summer 2014  
A mandatory online program that educates first-year students how alcohol can impact their wellness, academic success, and personal development.
- 6 Increased Staffing** Fall 2014  
Director of Corvallis Community Relations hired

- 7 Welcome Week Canvassing** Fall 2014  
Volunteers visit neighborhoods to meet Corvallis residents and distribute information with resources, tips and information designed to foster increased responsibility and improved neighborhood livability.
- 8 AD&V Prevention Center** Fall 2014  
The vision of the Alcohol, Drug, & Violence Prevention Center is to create a safe and supportive learning environment in which OSU students thrive that is free of high-risk alcohol and other drug use, and violence
- 9 Preferred Renters Program** Winter 2015  
Students attend workshops and receive education on "being a good neighbor" in order to increase livability standards in Corvallis Community
- 10 Increased Staffing** Spring 2015  
New Director for Center for Fraternity and Sorority Life hired
- 11 START Gameshow** Summer 2015  
Gameshow to provide alcohol, violence, and wellness education to students during summer orientation sessions in a fun and engaging game
- 12 Increased Staffing** Summer 2015  
Alcohol, Drug, & Recovery Specialist hired for the Alcohol, Drug, & Violence Prevention Center
- 13 Increased Staffing** Fall 2015  
Certified Alcohol & Drug Counselor (CADC III) hired for the Alcohol, Drug, & Violence Prevention Center
- 14 Interfraternity Council (IFC) Social Event Policy** Fall 2015  
Policy aimed to reduce risks involved with social activities in fraternities and/or their affiliated properties. Fraternities must report a social event at least 48 hours prior to the event taking place.
- 15 Increased Staffing** Summer 2016  
Alcohol, Drug, & Violence Prevention Coordinator hired for the Alcohol, Drug, & Violence Prevention Center
- 16 Wellness Agents Peer Program** Fall 2016  
Students can get involved in making OSU a healthier, more inclusive community by working with professional faculty in Alcohol, Drug, & Violence Prevention, Community relations, Survivor Advocacy, Health Promotion, and Mental Health.
- 17 Resident Education for Alcohol & Violence Prevention Workgroup** Fall 2016  
Professional faculty from University Housing and Dining Services and Alcohol, Drug, & Violence Prevention Center working together to assess successes and gaps in prevention work in order to provide recommendations to leadership on improving prevention efforts

## Shared Community Efforts

- 1 Collaboration Corvallis** Fall 2012  
Evaluates and recommends unique programs and standards that enhance livability around the OSU campus
- 2 Prevention Advocacy Coalition** Winter 2015  
The OSU Prevention and Advocacy Coalition ensures strategic and coordinated efforts campus-wide related to prevention and advocacy and the broad use of evidence-informed best-practices. The Coalition employs a multi-unit stakeholder approach to create reach across the campus and within the community.
- 3 Corvallis Relations Advisory Group** Spring 2015  
Established by City of Corvallis and Oregon State University to enhance livability and community engagement. The group meets monthly to monitor progress of livability improvement projects and to share policy recommendations.
- 4 Neighborhood Livability Survey** Fall 2016  
The Neighborhood Livability Survey will be mailed to a random sample of Corvallis residents. The survey is coordinated by the Community Relations Advisory Group (CRAG). Survey results will provide a baseline of metrics from which the CRAG may measure the livability of Corvallis neighborhoods in

subsequent years. Furthermore, survey results will be used to help identify livability concerns, and will be used to inform policy and programmatic recommendations for mitigating town-gown issues.

- 5 Town Hall to Prevent Underage and High-Risk Drinking** Fall 2016  
With support from the Substance Abuse and Mental Health Services Administration (SAMHSA), Oregon State University and the surrounding Corvallis Community will engage in discussion to discuss OSU's prevention efforts and to collaborate on continued partnership
- 6 Alcohol Responsibility Program** Fall 2016  
RRF received funding from the National Institutes of Health for this project. RRF and International Town & Gown Association (ITGA) are working together to develop Alcohol Responsibility Programs that promote the responsible sale, service, and consumption of alcohol to serve as a platform for addressing additional issues related to alcohol use and abuse in the community.

## County and State Efforts

- 1 Alcohol Advertising Restrictions** Spring 2010  
OAR 845-007-0020; Restricts "happy hour" advertising language, location of advertisements, and limits various claims that could be made with advertisements.
- 2 Special Response Notices** Summer 2010  
Corvallis Ordinance Section 5.03.150.010; Police can issue a warning to residence if they suspect a violation of the law, if police return to the same residence within 30 days of the warning they receive a citation and are billed for the second call, office time, administrative overhead, and vehicle use. Students began receiving letters starting the Fall of 2015
- 3 Oregon Medical Amnesty Law** Winter 2015 (ORS 471.430.10(a))  
If a person calls 911 for someone they think is experiencing alcohol poisoning, both the person making the phone call and the person in need of medical attention are protected from getting a Minor in Possession Charge regardless if they have been consuming alcohol and/or are under the age of 21.

# In Progress: Campus Event Alcohol Service Policy in Student Affairs' Facilities

- Proposed Action: Create an approval system for alcohol service at events held in facilities under Student Affairs' purview
- Goal: A reduction of on-campus events that serve alcohol where students are the primary audience

# AlcoholEdu & Haven

- Online programs became required in fall 2014
- AlcoholEdu required of all Corvallis-based first year undergraduate students
- Haven required for all new incoming students

**16,882 students have completed AlcoholEdu**  
**25,126 students have completed Haven**

# Certified Alcohol and Drug Counselor

## Student Health Service

- Hired in summer of 2015 for 20 hours a week and quickly booked out
- Increased to full time position

Students seen since 9/26/16

- Initial evals (100 minutes appointments) =59
- Follow up 1:1 counseling sessions (40 minute appointments) =81
- Returning students (higher level of care) =24
- Currently booked out 40 days
- All without any advertisement

Request a workshop for your class on alcohol and other drug prevention, violence prevention and wellness:

<http://studenthealth.oregonstate.edu/workshops>

For more information or to get more involved please contact:

**(541) 737-7564**

**[Robert.Reff@oregonstate.edu](mailto:Robert.Reff@oregonstate.edu)**

Rob Reff, PhD

Director

Prevention, Advocacy and Wellness

Student Health Services