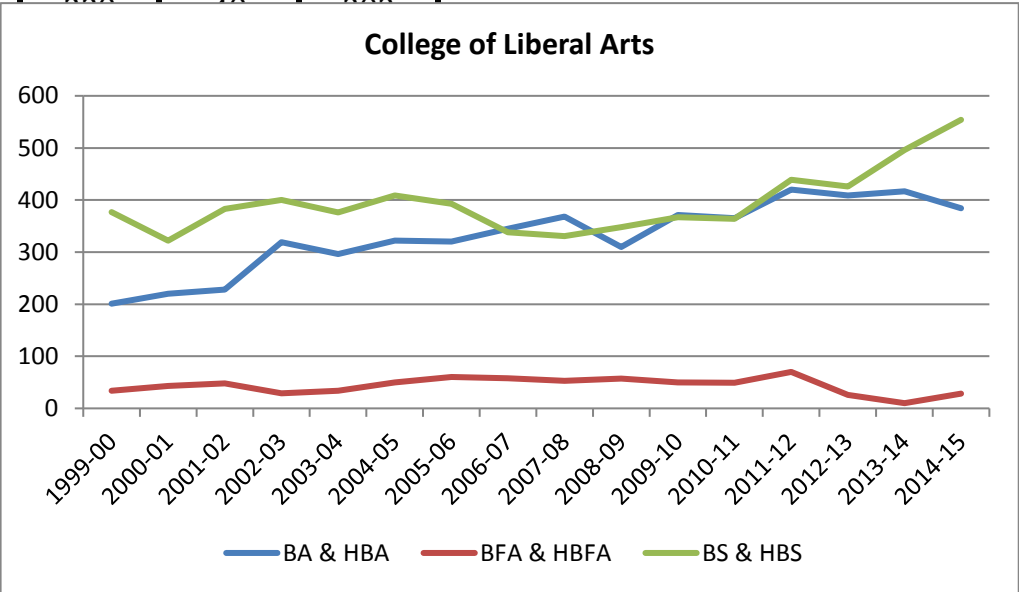
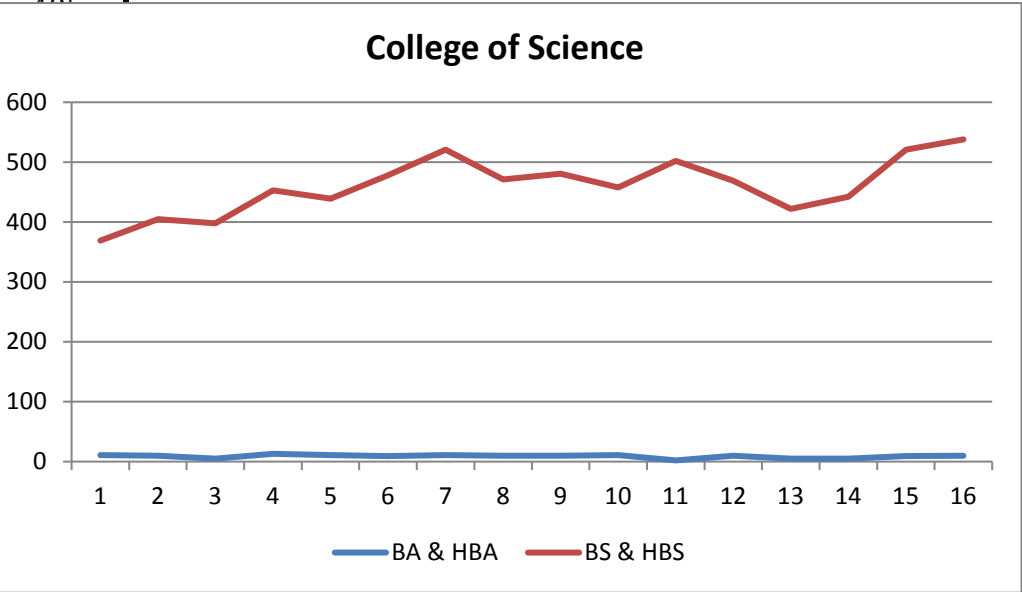


Column1	BA & HBA	BFA & HBFA	BS & HBS
1999-00	201	34	377
2000-01	220	43	322
2001-02	220	43	322
2002-03	320	30	400
2003-04	300	35	380
2004-05	320	50	400
2005-06	320	60	380
2006-07	350	55	330
2007-08	370	50	330
2008-09	310	55	350
2009-10	370	50	360
2010-11	360	50	360
2011-12	420	70	440
2012-13	400	30	420
2013-14	410	10	500
2014-15	380	30	550



BA & HBA	BS & HBS
11	369
10	495
5	
13	
11	
9	
11	
10	
10	
11	
2	
10	
5	
5	
9	
10	538



	CLA	COS
Column1	BS & HBS	BS & HBS3
1999-00	377	369
2000-01		
2001-02		
2002-03		
2003-04		
2004-05		
2005-06		
2006-07		
2007-08	331	481
2008-09	348	458
2009-10	367	502
2010-11	364	469
2011-12	439	422
2012-13	426	442
2013-14	496	521
2014-15	554	538

