



Faculty Senate

Updates from the Division of International Programs

Mark Hoffman, Vice Provost



Division of International Programs

MISSION

The Division of International Programs **leads OSU's internationalization through innovation, service, and collaboration.**

Division of International Programs—Values

Impact

Diversity

Transformation

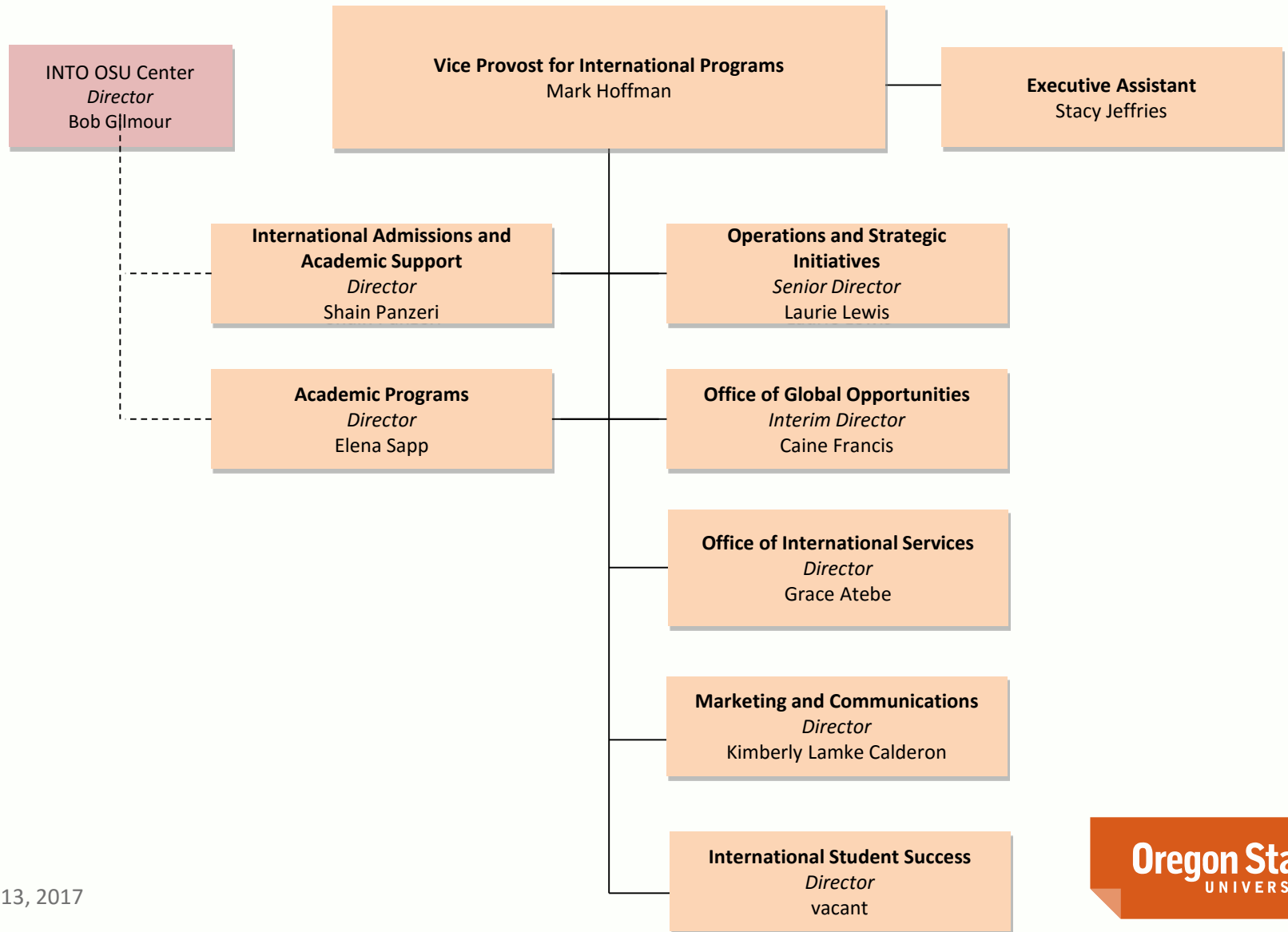
Relationships

Service

Community



Organizational Chart



Office of International Services

Grace Atebe, Director

- Advising and services for international students, scholars and faculty;
- Consulting on visa and immigration issues;
- Hosting international visitors;
- Hiring international employees



Office of Global Opportunities

Caine Francis, Interim Director

- Advises OSU students on more than 200 international opportunities for education, internships and research in more than 70 countries around the world.
- Provides support for OSU faculty who administer departmental exchange programs and are interested in teaching or leading a program abroad.

Student participation in education abroad programs has increased by 25% in the last year.

The number of faculty-led study abroad programs has doubled since 2016.

Major Campus-Wide Initiatives

The University International Strategy Council (UISC)

- Developing and implementing a Blueprint for OSU's Internationalization

The International Traveler Risk Committee (ITRC)

- Responsible for writing and overseeing a campus-wide International Travel Policy.



University International Strategy Council (UISC)

Includes representatives from the following campus units:

Division of International Programs: Mark Hoffman, Chair

Office of the Provost: Gigi Bruce

Student Affairs: Susie Brubaker-Cole

Faculty Senate: Jon Dorbolo

INTO OSU: Bob Gilmour

Research Office: Roy Haggerty

Academic Colleges: Sastry Pantula



UISC—Blueprint for Campus Internationalization

The UISC is authoring a document that will detail a **Blueprint for OSU's Internationalization**. The Blueprint will address six categories, with working groups established for each:

- International Experiential Learning
- Curriculum Internationalization
- International Student Success
- Global Research
- Global Partnerships
- Alumni Engagement

The Blueprint will set the framework for campus internationalization, allowing units, departments, and academic colleges to utilize their unique strengths to build on that framework, rather than having to follow a prescriptive plan.

International Traveler Risk Committee (ITRC)

- Policy being developed will protect the university and the safety of individuals working and studying internationally.

International Programs: Mark Hoffman, Chair

The Graduate School: Jessica Beck

Office of Global Opportunities (Study Abroad): Caine Francis

Undergraduate Studies: Julie Greenwood

Student Affairs: Dante Holloway

Risk Management: Patrick Hughes and Christina McKnight

The Research Office: Mark Peters

Business Affairs: Alex Sims

University Compliance: Christopher Viggiani

International Travel Policy

- Draft policy will be ready for vetting by May 1, 2017.
- Version 1.0 of the **International Travel Registry** for faculty, students, and staff is up and running.




<http://international.oregonstate.edu/international-travel>



[HOME](#) [STUDENTS](#) [SCHOLARS & FACULTY](#) [EDUCATION ABROAD](#) [ABOUT](#) [GLOBAL ACTIVITY](#) [TRAVEL REGISTRY](#)

International Travel



OSU's International Travel Registry

Student Registry

FOR TRAVELERS WHO ARE:

Undergraduate students
Graduate students
PhD students

[Register Travel](#)

Employee Registry

FOR TRAVELERS WHO ARE:

Faculty/Staff, Graduate Teaching Assistants, Graduate Teaching Fellows,
Graduate Research Assistants, Post Docs, Volunteers

[Register Travel](#)

Proxy Registry

FOR INDIVIDUALS WHO ARE:

Registering travel for someone
other than themselves

[Register Travel](#)



12
April 13, 2017

Oregon State
UNIVERSITY